

TECHNICAL MANUAL

ORGANIZATIONAL, DIRECT SUPPORT, AND GENERAL SUPPORT

MAINTENANCE REPAIR PARTS AND SPECIAL TOOLS LIST

(INCLUDING DEPOT MAINTENANCE REPAIR PARTS AND SPECIAL TOOLS)

FOR

TOWER AB-585/G

(NSN 5445-00-868-8179)

EXTENSION, TOWER AB-1221/G

(NSN 5445-00-586-6252)

EXTENSION, TOWER AB-1238/G

(NSN 5445-01-017-3458)

ACCESSORY KIT, TOWER MK-1725/G

(NSN 5445-00-586-6253)

HEADQUARTERS, DEPARTMENT OF THE ARMY

23 NOVEMBER 1983

TECHNICAL MANUAL

No 11-5985-348-24P



HEADQUARTERS
DEPARTMENT OF THE ARMY
WASHINGTON, DC, 23 November 1983

**ORGANIZATIONAL, DIRECT SUPPORT, AND GENERAL SUPPORT
MAINTENANCE REPAIR PARTS AND SPECIAL TOOLS LIST
(INCLUDING DEPOT MAINTENANCE REPAIR PARTS AND SPECIAL TOOLS)
FOR
TOWER-AB-585/G
(NSN 5445-00-868-8179)
EXTENSION, TOWER AB-12211G
(NSN 5445-00-586-6252)
EXTENSION, TOWER AB-1238/G
(NSN 5445-01-017-3458)
ACCESSORY KIT, TOWER MK-1725/G
(NSN 5445-00-586-6253)**

Current as of 15 August 1983

REPORTING ERRORS AND RECOMMENDING IMPROVEMENTS

You can help improve this manual. If you find any mistakes or if you know of a way to improve the procedures, please let us know. Mail your letter, DA Form 2928 (Recommended Changes to Publications and Blank Forms), or DA Form 2028-2 located in back of this manual direct to: Commander, US Army Communications-Electronics Command and Fort Monmouth, ATTN: DRSEL-ME-MP, Fort Monmouth, NJ 07703. In either case, a reply will be furnished direct to you.

Table of Contents

SECTION		Page	Illus Figure
I.	Introduction.....	1	
GROUP	II. Repair Parts List	5	
	01 Tower AB-58/G.....	5	1
	0101 Base Assembly.....	7	2
	0102 Tower Section	9	3
	010201 Platform Assembly	11	4
	010202 Ladder Assembly.....	13	5
	010203 R.H. Diagonal Brace Assembly	15	6
	010204 L.H. Diagonal Brace Assembly (See Group 010203 for parts)		
	0103 Trap Door Assembly.....	17	7
	0104 Top Assembly.....	19	8
	0106 A-Frame Assembly.....	21	9
	0106 Antenna Mounting Post Assembly	23	10
	0107 Guy Assembly (SMD980179-1).....	26	11
	0108 Antenna Staybar	27	12
	0109 Horizontal Brace Assembly	29	13
	0110 Swivel Coupler Assembly	31	14

*This manual supersedes so much of TM 11-5981-348-14&P, 6 September 1978, as pertains to repair parts and special tools list.

Table of Contents - cont.

SECTION GROUP		Page	Illus Figure
II.	0111 Ground Rod Assembly	33	15
01	0112 Lead, Electrical.....	35	16
	0113 Davit Assembly.....	37	17
	011301 Upper Davit Assembly.....	39	18
	011302 Lower Davit Assembly.....	41	19
	01130201 Splice Tube Assembly.....	43	20
	01130202 Handle Assembly	45	21
	01130203 Support Coupler Assembly.....	47	22
	011303 Retaining Coupler.....	49	23
	011304 Tackle Block Assembly	51	24
02	Tower Extension AB1221/G	55	25
	0201 Guy Assembly	57	26
	0202 Waveguide Clamp	59	27
	0203 Waveguide Storage Bin.....	61	28
03	Tower Accessory Kit MK-1725/G	63	29
04	Tower Extension AB-1238/G.....	67	30
SECTION	III. Special Tools List (Not applicable)		
	IV. National Stock Number and Part Number Index	68	

SECTION I INTRODUCTION

1. Scope

This manual lists spares and repair parts; special tools; special test, measurement, and diagnostic equipment (TMDE), and other special support equipment required for performance of organizational, direct support, and general support maintenance of the AB-585/G, AB-1221/G, AB-1238/G and ME 1725/G. It authorizes the requisitioning and issue spares and repair parts as indicated by the source and maintenance codes.

2. General

This Repair Parts and Special Tools List is divide into the following sections:

a. Section II. Repair Parts List. A list of spares and repair parts authorized for use in the performance of maintenance. The list also includes parts which must be removed for replacement of the authorized part Parts lists are composed of functional groups in numeric sequence, with the parts in each group listed in figure and item number sequence.

b. Section III. Special Tools List. Not applicable.

c. Section IV. National Stock Number and Part Number Index. A list, in National item identification number (NIIN) sequence, of all National stock numbers (NSN) appearing in the listings, followed by a list, in alphameric sequence, of all part number appearing in the listings. National stock numbers and part numbers are cross-referenced to each illustration figure and item number appearance.

3. Explanation of Columns

a. Illustration. This column is divided as follows

(1) *Figure number.* Indicates the figure number of the illustration on which the item is shown.

(2) *Item number.* The number used to identify item called out in the illustration.

b. Source, Maintenance, and Recoverability (SMR) Codes.

(1) *Source code.* Source codes indicate the manner of acquiring support items for maintenance repair, or overhaul of end items. Source codes are entered in the first and second positions of the Uniform SMR Code format as follows:

<i>Code</i>	<i>Definition</i>
PA-	Item procured and stocked for anticipated or known usage.
PB-	Item procured and stocked for insurance purpose because essentially dictates that a minimum quantity be available in the supply system.
PD-	Support item, excluding support equipment, procured for initial issue or outfitting and stocked only for subsequent or additional initial issues or outfittings. Not subject to automatic replenishment.
PE-	Support equipment procured and stocked for initial issue or outfitting to specified maintenance repair activities.
AO-	Item to be assembled at organizational level.
AF-	Item to be assembled at direct support maintenance level.
XB-	Item is not procured or stocked. If not available through salvage, requisition.
XD-	A support item that is not stocked. When required, item will be procured through normal supply channels.

NOTE

Cannibalization or salvage may be used as a source of supply for any items source coded above except those coded XA and aircraft support items as restricted by AR 750-1.

(2) *Maintenance code.* Maintenance codes are assigned to indicate the levels of maintenance authorized to USE and REPAIR support items. The maintenance codes are entered in the third and fourth positions of the Uniform SMR Code format as follows:

(a) The maintenance code entered in the third position will indicate the lowest maintenance level authorized to remove, replace, and use the support item. The maintenance code entered in the third position will indicate one of the following levels of maintenance:

<i>Code</i>	<i>Definition</i>
O-	Support item is removed, replaced, used at the organizational level.
F-	Support item is removed, replaced, used at the direct support level.
H-	Support item is removed, replaced, used at the general support level.
D-	Support items that are removed, replaced, used at depot, mobile depot, specialized repair activity only.

(b) The maintenance code entered in the fourth position indicates whether the item is to be repaired and identifies the lowest maintenance level with the capability to perform complete repair (i.e., all authorized maintenance functions). This position will contain one of the following maintenance codes:

<i>Code</i>	<i>Application/Definition</i>
H-	The lowest maintenance level capable of complete repair of the support item is the general support level.
D-	The lowest maintenance level capable of complete repair of the support item is the depot level.
Z-	Nonreparable. No repair is authorized.

(3) *Recoverability code.* Recoverability codes are assigned to support items to indicate the disposition action on unserviceable items. The recoverability code is entered in the fifth position of the Uniform SMR Code format as follows:

<i>Recoverability codes</i>	<i>Definition</i>
Z-	Nonreparable item. When unserviceable, condemn and dispose at the level indicated in position 3.
H-	Reparable item. When uneconomically repairable, condemn and dispose at the general support level.
D-	Reparable item. When beyond lower level repair capability, return to depot. Condemnation and disposal not authorized below depot level.
A-	Item requires special handling or condemnation procedures because of specific reasons (i.e., precious metal content, high dollar value, critical material or hazardous material). Refer to appropriate manuals/directives for specific instructions.

c. *National Stock Number.* Indicates the National stock number assigned to the item and will be used for requisitioning purposes.

d. *Federal Supply Code for Manufacturer (FSCM).* The FSCM is a 5-digit numeric code listed in SB 708-41/42 which is used to identify the manufacturer, distributor, or Government agency, etc.

e. *Part Number.* Indicates the primary number used by the manufacturer (individual, company, firm,

corporation, of Government activity), which controls the design and characteristics of the item by means of its engineering drawings, specifications, standards, and inspection requirements to identify an item or range of items.

NOTE

When a stock numbered item is requisitioned, the repair part received may have a different part number than the part being replaced.

f. *Description.* Indicates the Federal item name and, if required, a minimum description to identify the item.

g. *Unit of Measure (U/M).* Indicates the standard of the basic quantity of the listed item as used in performing the actual maintenance function. This measure is expressed by a two-character alphabetical abbreviation (e.g., ea, in, pr, etc). When the unit of measure differs from the unit of issue, the lowest unit of issue that will satisfy the required units of measure will be requisitioned.

h. *Quantity Incorporated in Unit.* Indicates the quantity of the item used in the breakout shown on the illustration figure, which is prepared for a functional group, subfunctional group, or an assembly.

4. Special Information

a. Usable on codes are shown in the description column. Uncoded items are applicable to all models. Identification of the usable on codes used in this publication are:

<i>Code</i>	<i>Used on</i>
CNX	AB-585/G
CN5	AB-1221/G
CN4	MK-1725/G
DEB	AB-1238/G

b. Detailed assembly instructions for items source coded to be assembled are found in TM 11-5985-34814&P. Assembly components are listed immediately following the item to be assembled.

c. The following publication pertains to the AB585/G, AB-1221/G, AB-1238/G, and MK-1725/G and their components: TM 11-5985-348-14&P, Tower AB-585/G, Extension, Tower AB-1221/G, and AB-1238/G and Accessory Kit, Tower MK-1725/G.

d. National stock numbers (NSN's) that are missing from P source coded items have been applied for and will be added to this TM by future change/ revision when they are entered in the Army Master Data File (AMDF). Until the NSN's are established

and published, submit exception requisitions to Commander, US Army Communications-Electronics Command and Fort Monmouth, ATIN: DRSEL-MM Fort Monmouth, New Jersey 07703 for the par required to support your equipment.

5. How to Locate Repair Parts

a. When National stock number or part number is unknown.

(1) *First.* Using the table of contents, determine the functional group within which the item belongs. This is necessary since illustrations are prepared for functional groups and listings are divided into the same groups.

(2) *Second.* Find the illustration covering the functional group to which the item belongs.

(3) *Third.* Identify the item on the illustration covering the functional group to which the item belongs.

(4) *Fourth.* Using the Repair Parts Listing, find the figure and item number noted on the illustration.

b. When National stock number or part number is known.

(1) *First.* Using the Index of National Stock Numbers, find the pertinent National stock number or part number. This index is in NIIN sequence followed by a list of part numbers in alphameric sequence, cross-referenced to the illustration figure number and item number.

(2) *Second.* After finding the figure and item number, locate the figure and item number in the repair parts list.

6. Abbreviations

Not applicable.

(Next printed page is 4.1)

By Order of the Secretary of the Army:

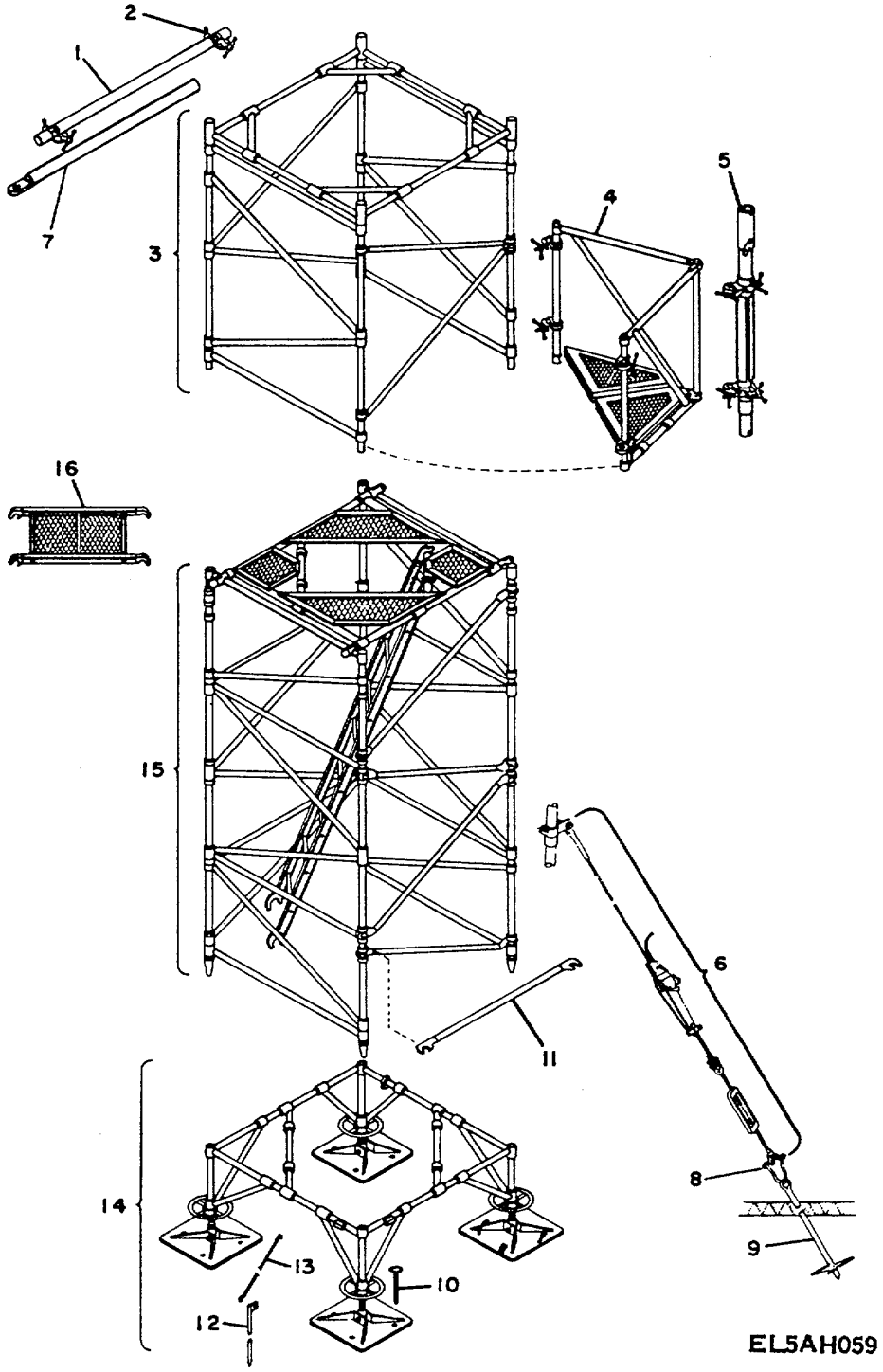
Official:

ROBERT M. JOYCE
Major General, United States Army
The Adjutant General

JOHN A. WICKHAM JR.
General, United States Army
Chief of Staff

DISTRIBUTION:

To be distributed in accordance with DA Form 12-5 1A, Organizational Maintenance requirements for AB-585/G.



EL5AH059

Figure 1. Tower AB-585/G (Sheet 1 of 2).

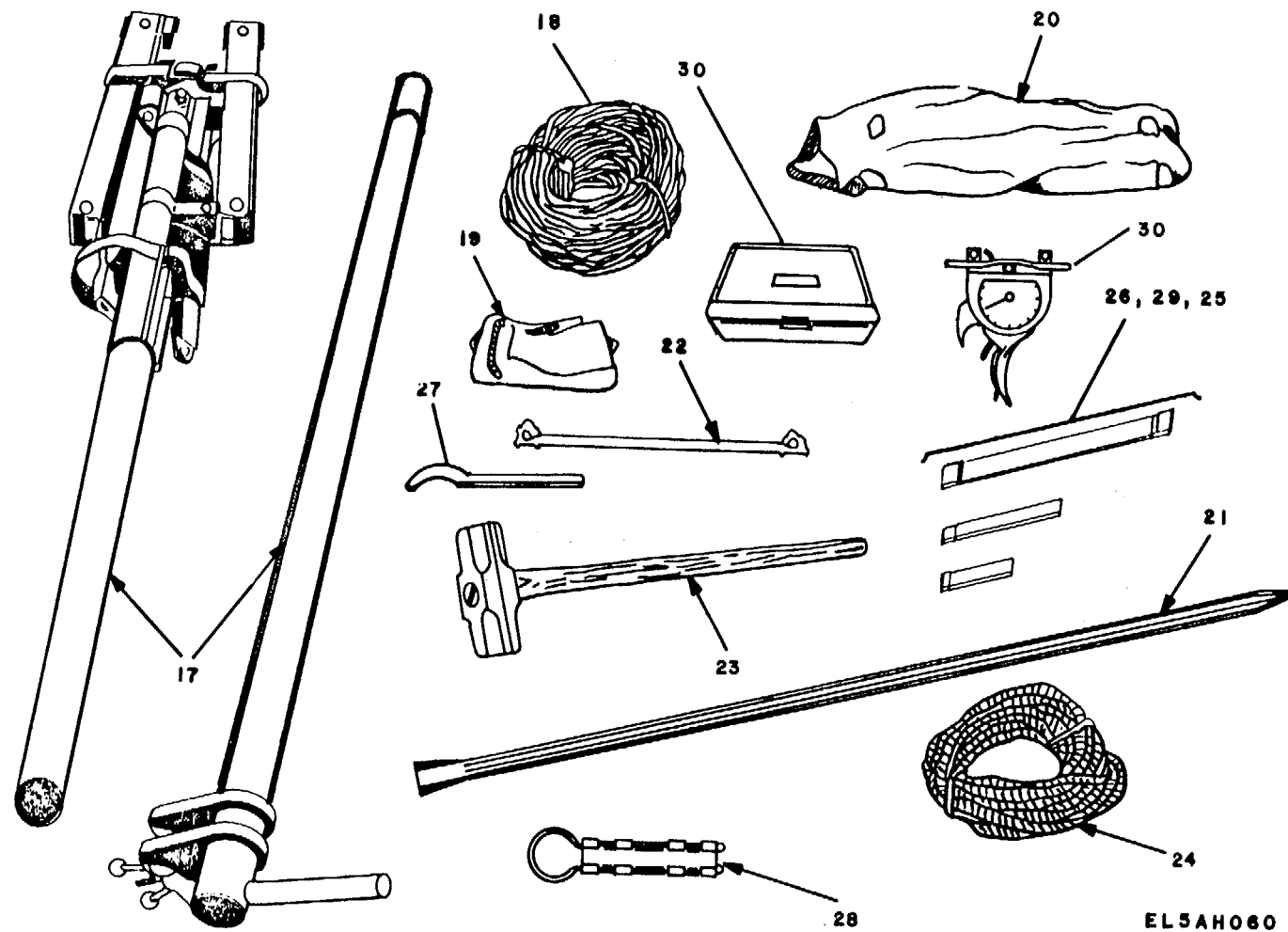
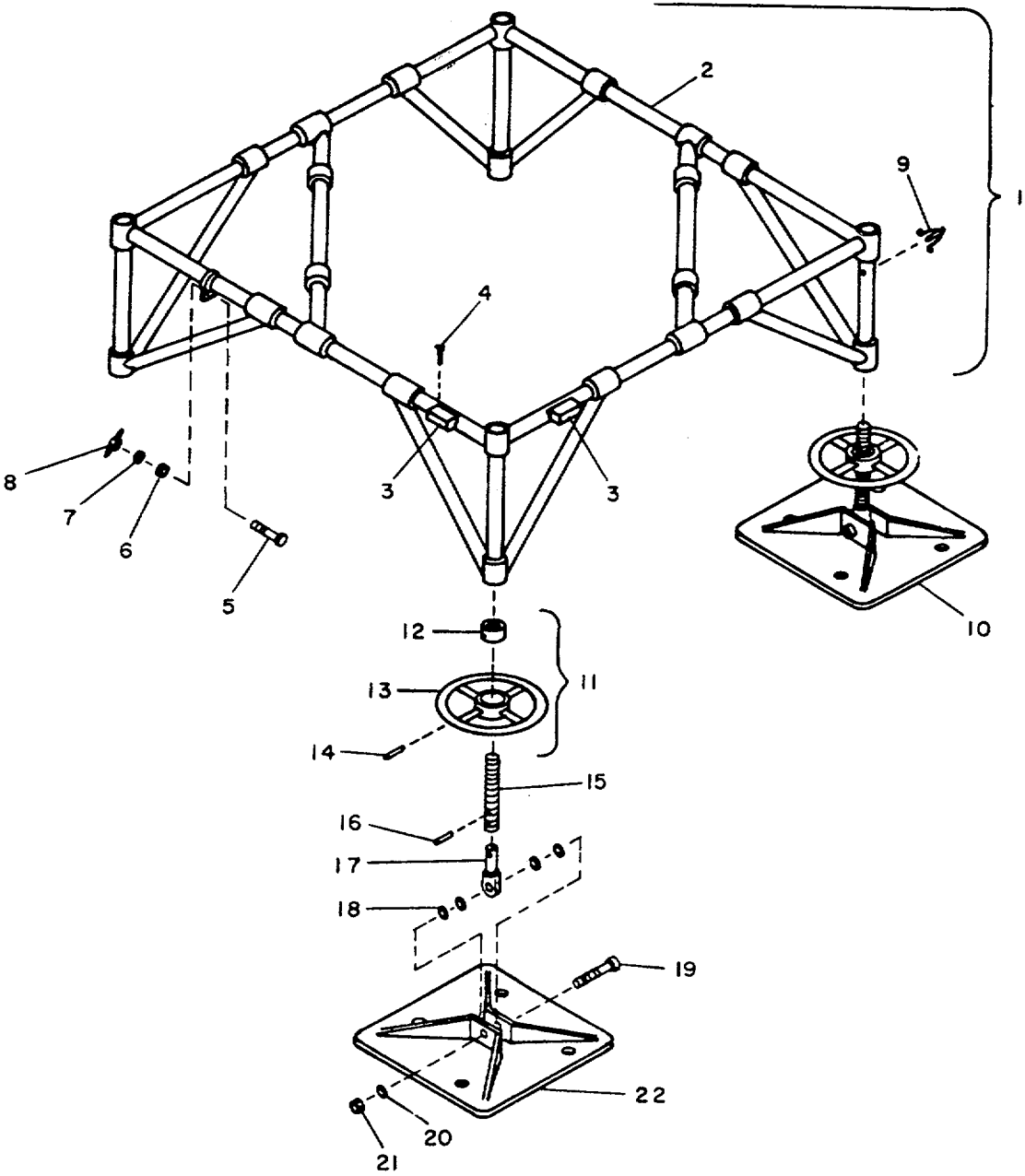


Figure 1. Tower AB-585/G (Sheet 2 of 2).

(1) ILLUSTRATION		(2)	(3)	(4)	(5)	(6)	(7)	(8)
(a) FIG NO.	(b) ITEM NO.	SMR CODE	NATIONAL STOCK NUMBER	FSCM	PART NUMBER	DESCRIPTION USABLE ON CODE	U/M	QTY INC IN UNIT
						GROUP 01 TOWER AS-585/G		
1	1	PBOZZ	5445-00-610-1501	80063	SM-B-982032	BRAC..... CNX	EA	8
1	2	PAOZZ	5445-00-611-7228	80063	SM-C-982010	COUPLER SWIVEL..... CNX	EA	24
1	3	PDODD	5445-00-626-9002	80063	SM-D-982002	TOP, TOWER..... CNX	EA	1
1	4	PDDDH	5445-00-629-5589	80063	SM-D-981786	A FRAME..... CNX	EA	4
1	5	PDODD	5445-00-626-9009	80063	SM-D-981787	POST, ANTENNA..... CNX	EA	4
1	6	PDODD	5445-00-626-8986	80063	SM-D-981789-1	GUY ASSEMBLY GREEN 60 FT..... CNX	EA	4
1	6	PDODD	5445-00-626-8987	80063	SM-D-981789-2	GUY ASSEMBLY BLUE 18 FT..... CNX	EA	4
1	6	PDODD	5445-00-626-9008	80063	SM-D-981789-3	GUY ASSEMBLY WHITE 160 FT..... CNX	EA	4
1	6	PDODD	5445-00-626-8979	80063	SM-D-981789-4	GUY ASSEMBLY RED 162 FT..... CNX	EA	8
1	7	PBOZZ	5445-00-610-1348	80063	SM-C-981883	STAYBAR ASSEMBLY..... CNX	EA	8
1	8	PAOZZ	5445-00-626-9023	80063	SM-B-982007	CLIVIS, ANCHOR..... CNX	EA	8
1	9	PAOZZ	4030-01-005-3268	80063	SM-B-982006-1	ANCHOR, GUY..... CNX	EA	4
1	9	PAOZZ	4030-01-008-1217	80063	SM-B-982006-2	ANCHOR, GUY..... CNX	EA	4
1	10	PAOZZ	4030-00-187-5261	96906	MS75014	STAKE GP2..... CNX	EA	16
1	11	PAOZZ	5445-01-017-6184	80063	SM-C-982080	BRACE, HORIZONTAL..... CNX	EA	22
1	12	XDOZZ	5975-00-549-0011	80063	SM-C-982015	ROD. GROUND ASSEMBLY..... CNX	EA	1
1	13	XDOZZ		80063	SM-B-982012	LEAD, ELECTRICAL..... CNX	EA	1
1	14	PDODD	5445-00-626-8978	80063	SM-D-981783	BASE, TOWER..... CNX	EA	1
1	15	PDODD	5445-00-610-9110	80063	SM-D-981184	SECTION.TOWER..... CNX	EA	11
1	16	PDODD	5445-01-016-2604	80063	SM-D-981871	DOOR, TRAP ASSEMBLY..... CNX	EA	1
1	17	PDODD	5445-00-626-8980	80063	SM-D-981770	DAVIT ASSEMBLY..... CNX	EA	1
1	18	PBOZZ	5445-00-611-1238	80063	SM-C-981976	TAGLINE..... CNX	EA	1
1	19	PAOZZ	5445-01-009-4357	80063	SM-B-982004	BAG.ACCESSORY..... CNX	EA	4
1	20	PBOZZ		80063	SM-B-982005	BAG, STAKE..... CNX	EA	1
1	21	PAOZZ	5120-01-028-4992	80063	SM-B-982000	BAR, DIGGING..... CNX	EA	2
1	22	PAOZZ	5445-00-611-7240	80063	SM-8-982031	DEVICE, LADDER..... CNX	EA	4
1	23	PBOZZ		80063	SM-8-981999	HAMMER..... CNX	EA	1
1	24	PAOZZ	4020-00-606-3836	80063	SM-B-982036	ROPE, ANCHOR LOCATIO..... CNX	EA	1
1	25	XBOZZ	5340-01-029-1969	80063	SM-B-981958-4	STRAP, WEBBING..... CNX	EA	27
1	26	PAOZZ	5340-01-151-4105	80063	SM-B-981958-3	STRAP..... CNX	EA	8
1	27	PEOZZ	5120-01-008-7957	80063	SM-B-982001	WRENCH, SPANNER..... CNX	EA	8
1	28	PAOZZ	5975-00-563-0229	80058	PF-211/G	CLAMP..... CNX	EA	36
1	29	PAOZZ	5340-01-151-4106	80063	SM-B-981958-5	STRAP..... CNX	EA	24
1	30	PBOZZ		80063	SM-B-982093	GAGE, TENSION..... CNX	EA	2



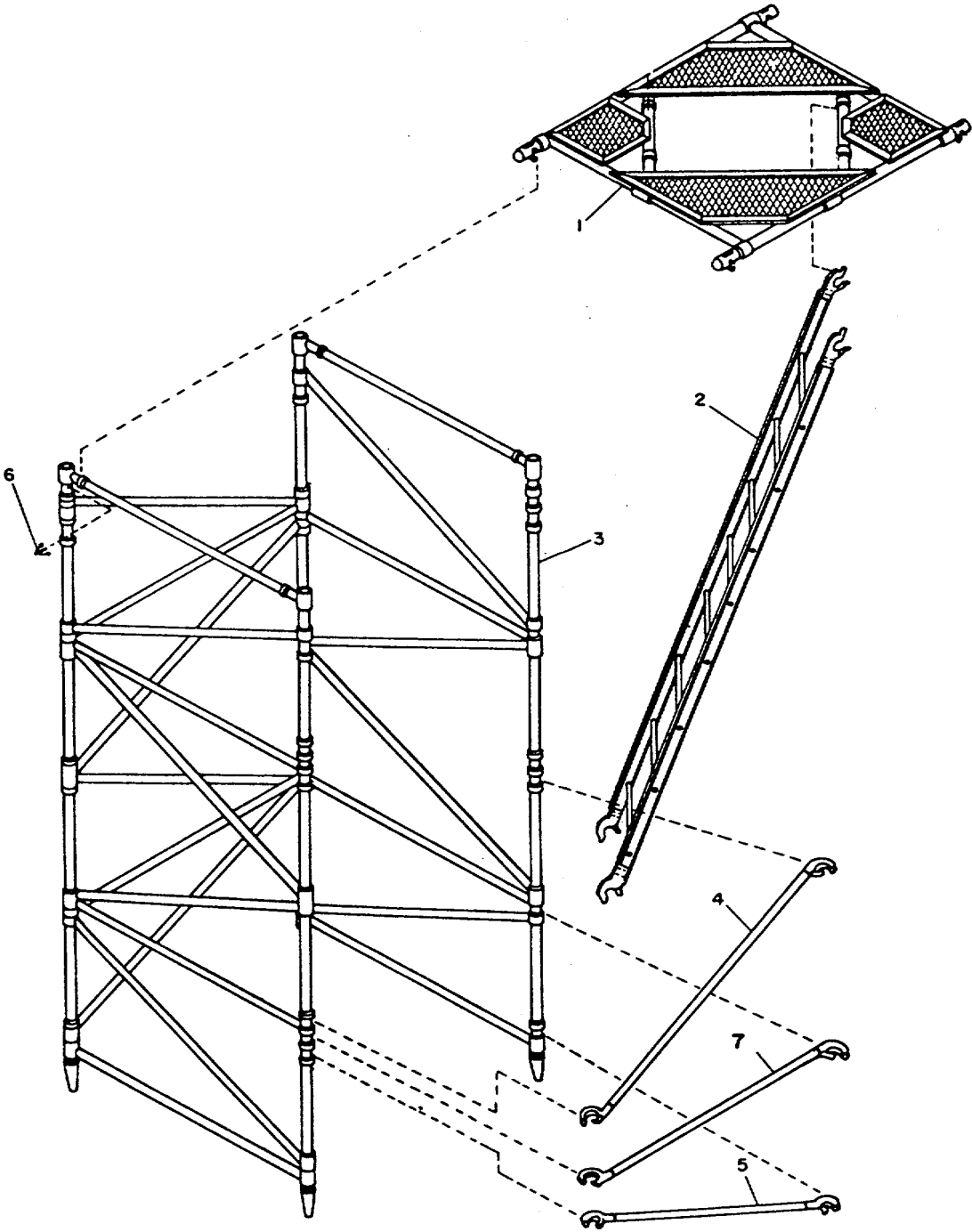
EL5AH061

Figure 2. Base Assembly.

SECTION II

TM 11-5985-348-24P

(1) ILLUSTRATION		(2)	(3)	(4)	(5)	(6)	(7)	(8)
(a) FIG NO.	(b) ITEM NO.	SMR CODE	NATIONAL STOCK NUMBER	FSCM	PART NUMBER	DESCRIPTION USABLE ON CODE	U/M	QTY INC IN UNIT
						GROUP 0101 BASE ASSEMBLY		
2	1	XDODD		80063	SM-S-981781	FRAME, BASE..... CNX	EA	1
2	2	PBOZZ	5445-00-610-1497	80063	SM-D-981805	FRAME CNX	EA	1
2	3	PAOZZ	5210-01-028-0949	80063	SM-B-981806	LEVEL CNX	EA	2
2	4	PAOZZ	5305-00-054-6652	96906	MS51957-28	SCREW, MACHINE CNX..... CNX	EA	4
2	5	PAOZZ		96906	MS16200-102	SCREW, MACHINE CNX EA..... CNX	EA	1
2	6	XDOZZ	5310-01-028-6494	80063	SM-B-982040-1	NUT, SELF-LOCKING, HE CNX	EA	1
2	7	PAOZZ	5310-00-802-4701	96906	MS15795-813	WASHER, FLAT CNX	EA	1
2	8	PAOZZ		80063	SM-B-982041-2	NUT, PLAIN, WING CNX	EA	1
2	9	PAOZZ	5445-00-626-9068	80063	SM-B-981792	CLIP.INTERLOCKING CNX	EA	4
2	10	XDFHH		80063	SM-D-981782	LEG ASSEMBLY, BASE CNX	EA	4
2	11	PAFZZ	5445-00-606-3800	80063	SM-D-981795	HANDWHEEL ASSEMBLY CNX	EA	1
2	12	XBFZZ		80063	SM-B-981804	NUT, ADJUSTING CNX	EA	1
2	13	XBFZZ		80063	SM-C-981803	HANDWHEEL..... CNX	EA	1
2	14	XBFZZ	5315-00-058-9812	96906	MS16562-255	PIN SPRING CNX	EA	1
2	15	PBFZZ	5445-00-610-1498	80063	SM-B-981794	LEG, ADJUSTABLE CNX	EA	1
2	16	PAFZZ	5315-00-814-4456	80205	NAS561C4-24	PIN, SPRING CNX	EA	1
2	17	PAFZZ	3120-01-007-1701	80063	SM-B-981798	BEARING, ROD END CNX	EA	1
2	18	PAFZZ	5310-01-006-0299	80063	SM-B-981797	SPACER..... CNX	EA	4
2	19	XDFZZ	5306-01-007-1477	80063	SM-B-981796	BOLT, SHOULDER..... CNX	EA	1
2	20	PAFZZ	5310-00-656-0114	96906	MS15795-819	WASHER, FLAT CNX	EA	1
2	21	PAFZZ		80063	SM-B-982040-3	LOCK NUT..... CNX	EA	1
2	22	PAFZZ		80063	SM-B-982040-3	NUT, SELF-LOCKIN CNX	EA	1



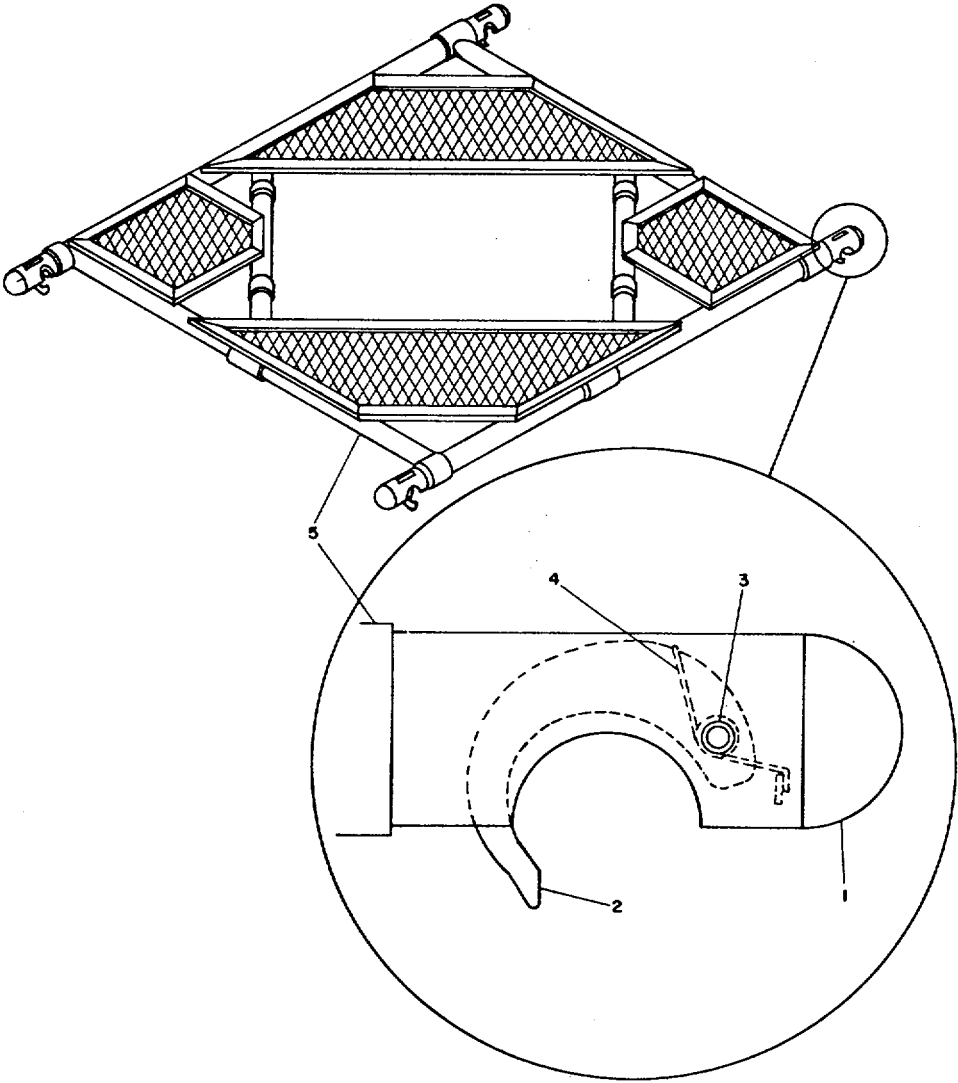
EL5AH062

Figure 3. Tower Section.

SECTION II

TM 11-5985-348-24P

(1) ILLUSTRATION		(2)	(3)	(4)	(5)	(6)	(7)	(8)
(a) FIG NO.	(b) ITEM NO.	SMR CODE	NATIONAL STOCK NUMBER	FSCM	PART NUMBER	DESCRIPTION USABLE ON CODE	U/M	QTY INC IN UNIT
						GROUP 0102 TOWER SECTION		
3	1	XDFHD		80063	SM-D-981843	PLATFORM ASSEMBLY CNX	EA	1
3	2	PBDHD	5445-00-626-9016	80063	SM-C-981864	LADDER ASSEMBLY CNX	EA	1
3	3	PBOZZ	5445-00-610-1335	80063	SM-D-981818	SECTION, THREE-PANEL CNX	EA	1
3	4	PAOZZ	5445-00-610-1506	80063	SM-D-982017	BRACE, DIAGONAL LEFT CNX	EA	2
3	5	PAOZZ	5445-00-610-1508	80063	SM-D-981834	BRACE, DIAGONAL, RIGH CNX	EA	2
3	6	PAOZZ	5445-00-626-9068	80063	SM-B-981792	CLIP, INTERLOCKING CNX	EA	4
3	7	PAOZZ	5445-01-017-6184	80063	SMC982080	BRACE HORIZONTAL ASSEMBLY CNX	EA	6



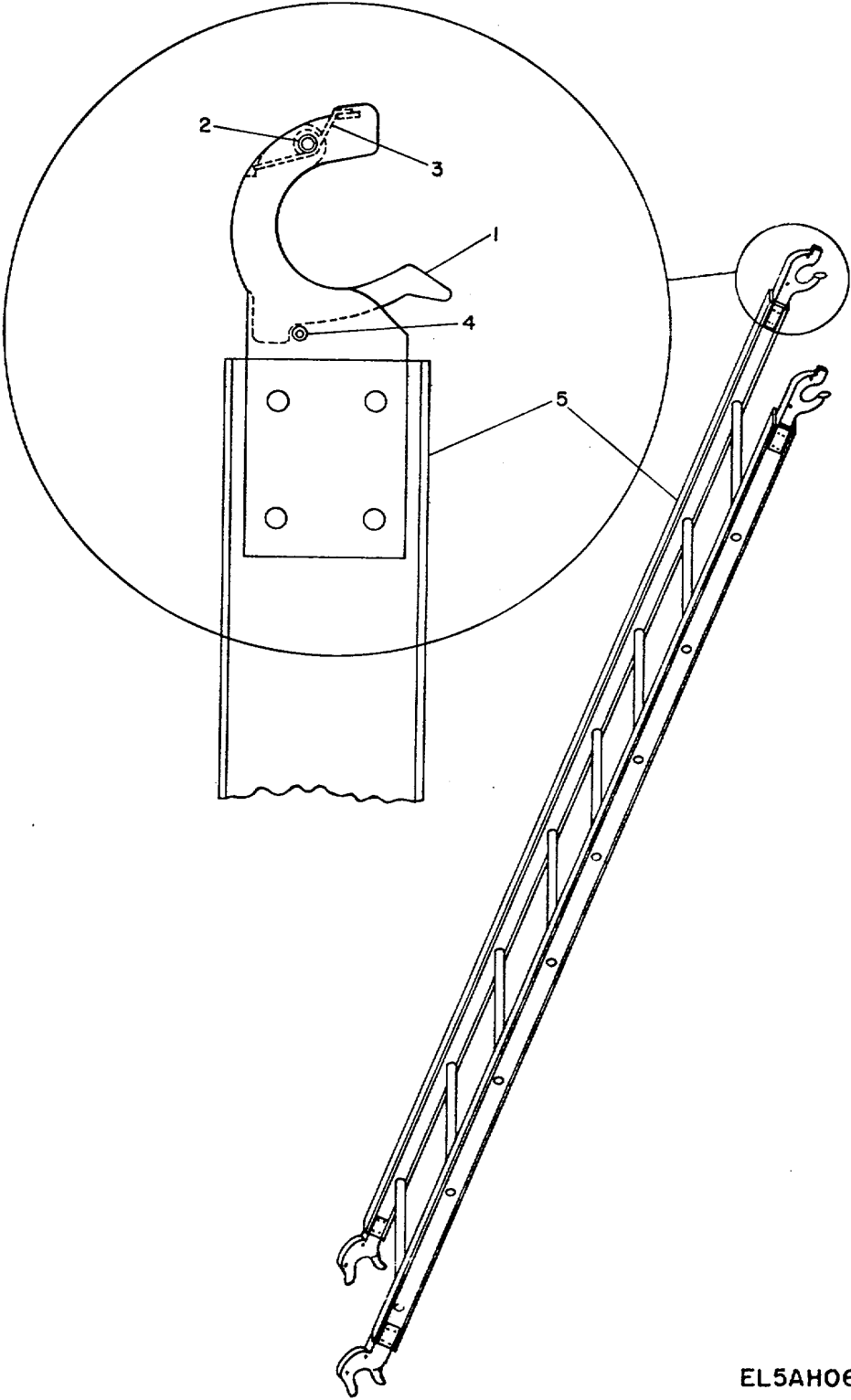
EL5AH063

Figure 4. Platform Assembly.

SECTION II

TM 11-5985-348-24P

(1) ILLUSTRATION		(2)	(3)	(4)	(5)	(6)	(7)	(8)
(a) FIG NO.	(b) ITEM NO.	SMR CODE	NATIONAL STOCK NUMBER	FSCM	PART NUMBER	DESCRIPTION USABLE ON CODE	U/M	QTY INC IN UNIT
						GROUP 010201 PLATFORM ASSEMBLY		
4	1	XBFZZ		80063	SM-B-981846	CAP CNX	EA	4
4	2	PAFZZ	5340-01-006-4068	80063	SM-B-981773	LATCH..... CNX	EA	4
4	3	PAFZZ	5315-00-058-9812	96906	MS16562-255	PIN, SPRING CNX	EA	4
4	4	PAFZZ	5340-01-008-6355	80063	SM-B-9B1847	SPRIN..... CNX	EA	4
4	5	PBFZZ	5445-00-610-1380	80063	SM-D-981844	PLATFORM CNX	EA	1



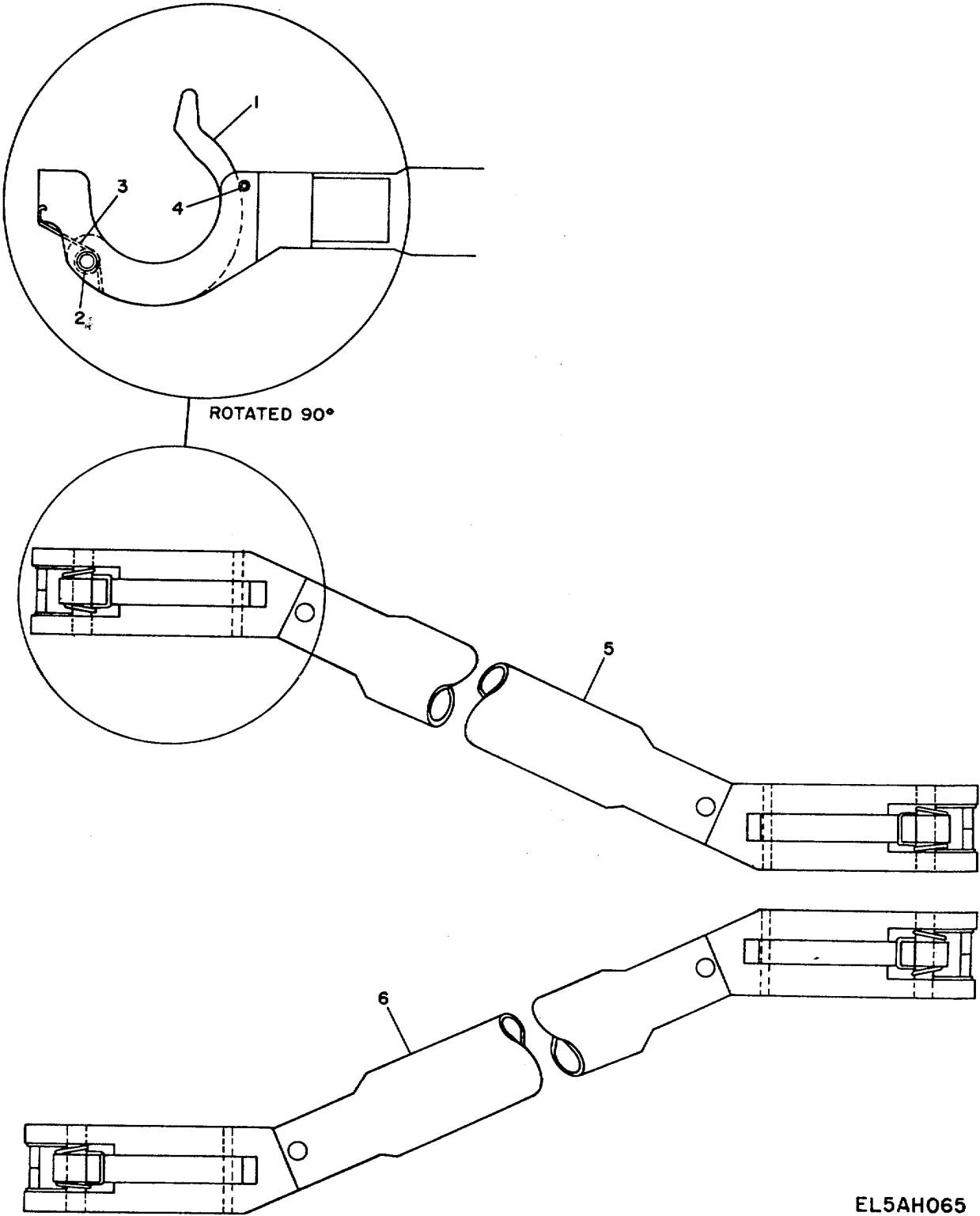
EL5AH064

Figure 5. Ladder Assembly.

SECTION II

TM 11-5985-348-24P

(1) ILLUSTRATION		(2)	(3)	(4)	(5)	(6)	(7)	(8)
(a) FIG NO.	(b) ITEM NO.	SMR CODE	NATIONAL STOCK NUMBER	FSCM	PART NUMBER	DESCRIPTION USABLE ON CODE	U/M	QTY INC IN UNIT
						GROUP 010202 LADDER ASSEMBLY		
5	1	PAFZZ	5340-01-008-7671	80063	SM-B-981866	LATCH..... CNX	EA	4
5	2	PAFZZ	5315-00-823-8742	96906	MS16562-252	PIN, SPRING CNX	EA	4
5	3	PAFZZ	5445-00-626-9071	80063	SM-B-981867	SPRIN..... CNX	EA	4
5	4	PAFZZ	5315-00-753-3894	96906	MS16562-238	PIN, SPRING..... CNX	EA	4
5	5	XBFZZ		80063	SM-C-981865	LADDER..... CNX	EA	1



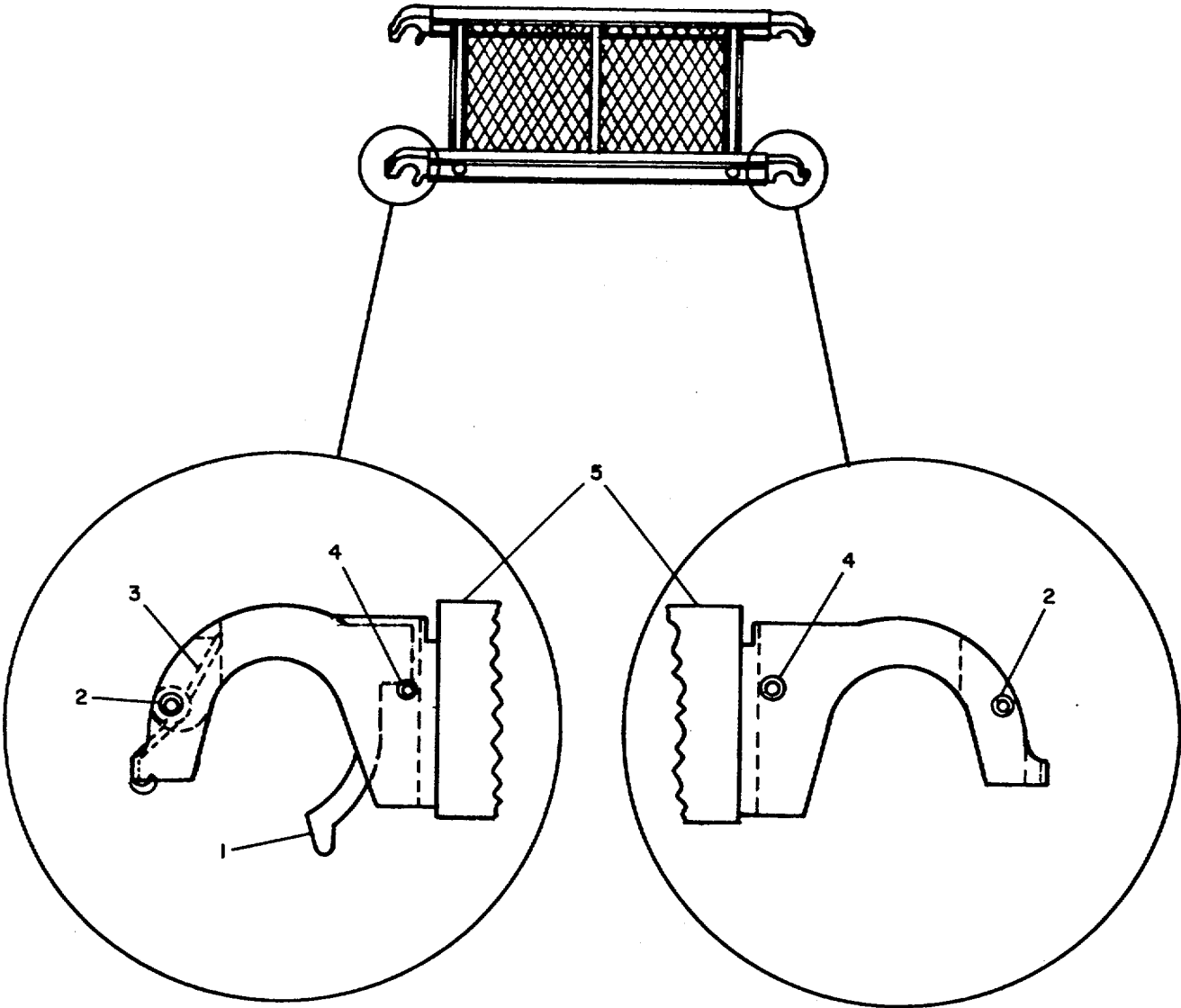
EL5AH065

Figure 6. R.H. Diagonal Brace Assembly.

SECTION II

TM 11-5985-348-24P

(1) ILLUSTRATION		(2)	(3)	(4)	(5)	(6)	(7)	(8)
(a) FIG NO.	(b) ITEM NO.	SMR CODE	NATIONAL STOCK NUMBER	FSCM	PART NUMBER	DESCRIPTION USABLE ON CODE	U/M	QTY INC IN UNIT
						GROUP 010203 R.H. DIAGONAL BRACE ASSEMBLY		
6	1	XBFZZ		80063	SM-B-981836	LATCH..... CNX	EA	2
6	2	XBFZZ	5315-00-058-9808	96906	MS16562-253	PIN,SPRING..... CNX	EA	2
6	3	XBFZZ		80063	SM-B-981837	SPRIN..... CNX	EA	2
6	4	XBFZZ	5315-00-058-9756	96906	MS16562-227	PIN, SPRING..... CNX	EA	2
6	5	XBFZZ		80063	SM-D-981835	BRACE, DIAGONAL R.H..... CNX	EA	1
6	6	XBFZZ		80063	SM-D-982018	BRACE, DIAGONAL L.H. CNX	EA	1



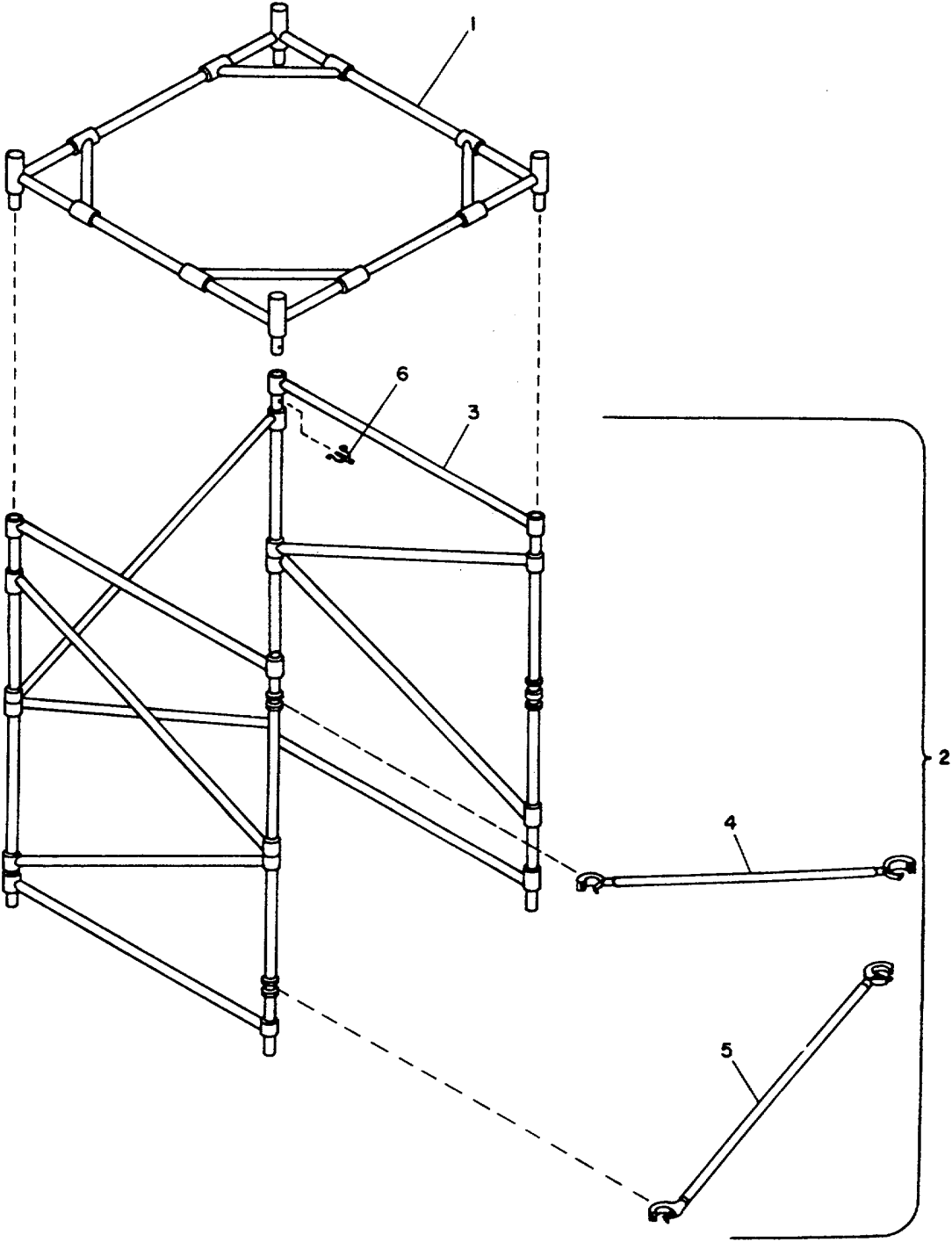
EL5AH066

Figure 7. Trap Door Assembly.

SECTION II

TM 11-5985-348-24P

(1) ILLUSTRATION		(2)	(3)	(4)	(5)	(6)	(7)	(8)
(a) FIG NO.	(b) ITEM NO.	SMR CODE	NATIONAL STOCK NUMBER	FSCM	PART NUMBER	DESCRIPTION USABLE ON CODE	U/M	QTY INC IN UNIT
						GROUP 0103 TRAP DOOR ASSEMBLY		
7	1	PAFZZ	5340-01-008-7671	80063	SM-B-981866	LATCH..... CNX	EA	2
7	2	PAFZZ	5315-00-823-8742	96906	NS16562-252	PIN, SPRING CNX	EA	4
7	3	PAFZZ	5445-00-626-9071	80063	SM-B-981867	SPRIN..... CNX	EA	2
7	4	XBFZZ	5315-00-753-3894	96906	M516562-238	PIN.SPRING CNX	EA	4
7	5	PBFZZ	5445-00-610-1505	80063	SM-D-981872	DOOR, TRAP CNX	EA	1



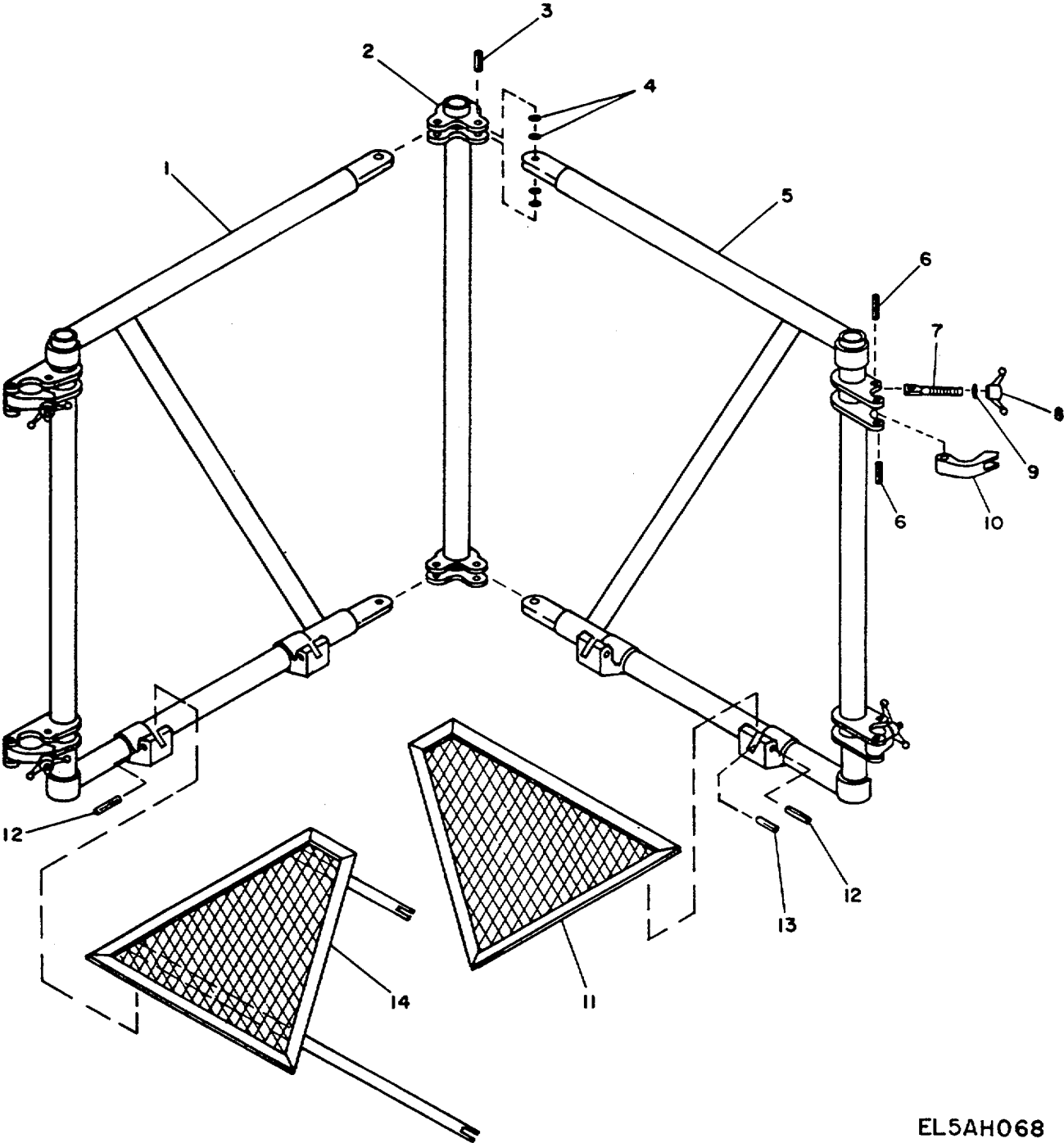
EL5AH067

Figure 8. Top Assembly.

SECTION II

TM 11-5985-348-24P

(1) ILLUSTRATION		(2)	(3)	(4)	(5)	(6)	(7)	(8)
(a) FIG NO.	(b) ITEM NO.	SMR CODE	NATIONAL STOCK NUMBER	FSCM	PART NUMBER	DESCRIPTION USABLE ON CODE	U/M	QTY INC IN UNIT
						GROUP 0104 TOP ASSEMBLY		
8	1	PBOZZ	5445-00-610-1377	80063	SM-D-981788	RAIL, GUARD..... CNX	EA	1
8	2	XDOZZ		80063	SM-D-981785	HALF-SECTION. TOWER CNX	EA	1
8	3	PAOZZ	5445-00-610-1353	80063	SM-D-981769	HALF-SECTIO CNX	EA	1
8	4	PAOZZ	5445-00-610-1508	80063	SM-D-981834	BRACE., DIAGONAL, RIGH CNX	EA	1
8	5	PAOZZ	5445-00-610-1506	80063	SM-D-982017	BRACE, DIAGONAL LEFT CNX	EA	1
8	6	PAOZZ	5445-00-626-9068	80063	SM-B-981792	CLIP, INTERLOCKING CNX	EA	4



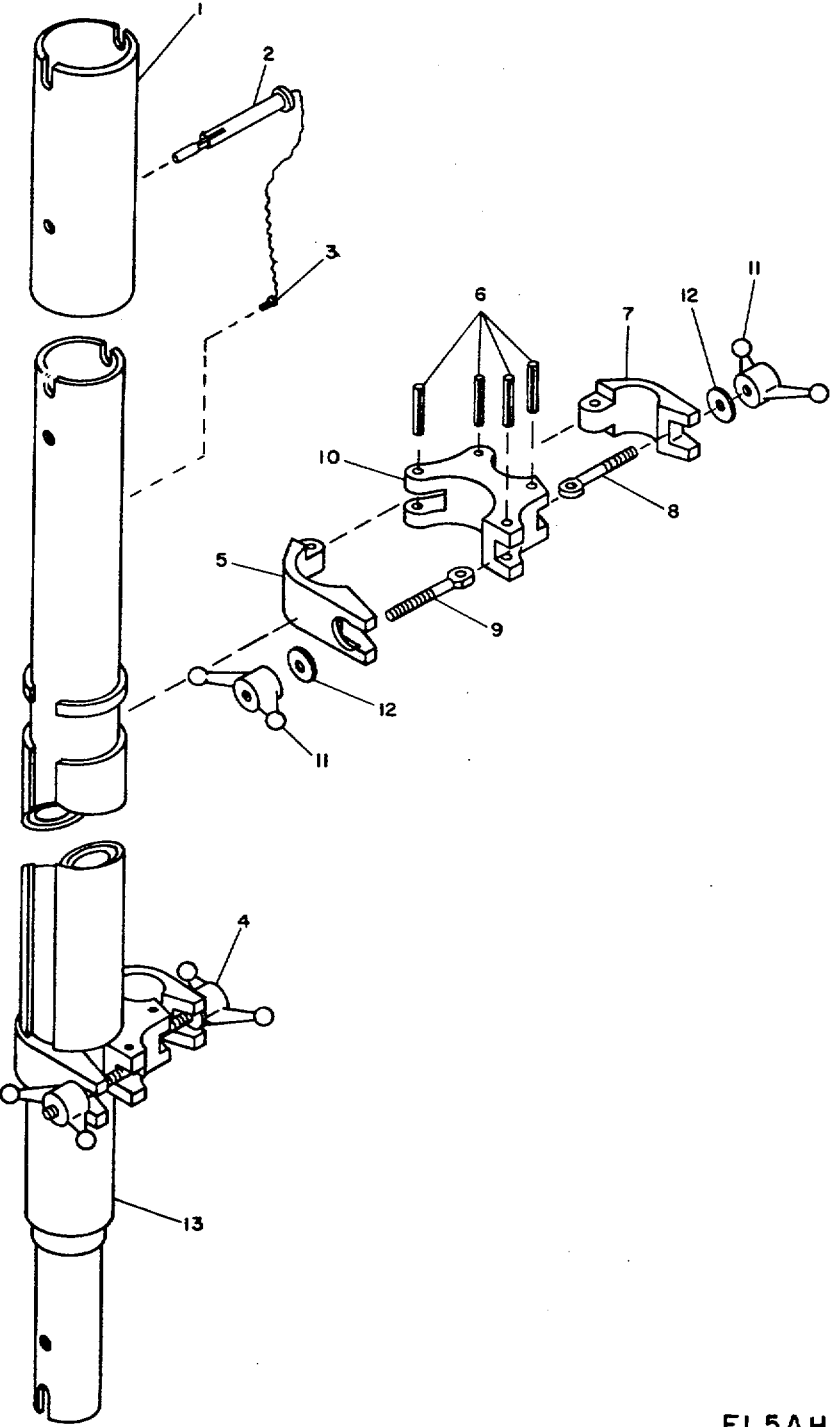
EL5AH068

Figure 9. A-Frame Assembly.

SECTION II

TM 11-5985-348-24P

(1) ILLUSTRATION		(2)	(3)	(4)	(5)	(6)	(7)	(8)
(a) FIG NO.	(b) ITEM NO.	SMR CODE	NATIONAL STOCK NUMBER	FSCM	PART NUMBER	DESCRIPTION USABLE ON CODE	U/M	QTY INC IN UNIT
						GROUP 0105 A-FRAME ASSEMBLY		
9	1	PBHZZ	5445-00-611-7290	80063	SM-C-981901	FRAME, RIGHT HAND CNX	EA	1
9	2	PBFZZ	5445-00-651-7289	80063	SM-C-981902	POST, CENTER CNX	EA	1
9	3	PBHZZ	5315-00-809-1147	96906	MS171717	PIN, SPRING CNX	EA	4
9	4	PAHZZ	5310-00-614-3506	96906	M515795-817	WASHER, FLAT CNX	EA	8
9	5	PBHZZ	5445-00-611-7291	80063	SM-C-9B1900	FRAME LEFT HAND CNX	EA	1
9	6	PBOZZ	5315-00-664-8062	96906	MS16562-269	PIN, SPRING CNX	EA	8
9	7	PBOZZ	5306-01-005-4391	80063	SM-B-981897-2	BOLT, EYE CNX	EA	4
9	8	PBFZZ		80063	SM-B-981B99	HANDLE, SPEED CNX	EA	4
9	9	PAFZZ	5310-00-656-0114	96906	MS15795-819	WASHER, FLAT CNX	EA	4
9	10	PAFZZ	5445-00-606-3683	80063	SM-C-98189B	CAP, COUPLER CNX	EA	4
9	11	PBFZZ	5445-00-611-7225	80063	SM-D-981903	PLATFORM, LEFT HAND CNX	EA	1
9	12	PAFZZ	5315-00-805-0300	96906	MS171663	PIN, SPRING CNX	EA	4
9	13	PAFZZ	5315-00-058-9756	96906	MS16562-227	PIN, SPRING CNX	EA	2
9	14	PBFZZ	5445-00-611-7297	80063	SM-D-981904	PLATFORM ASSY RH CNX	EA	1



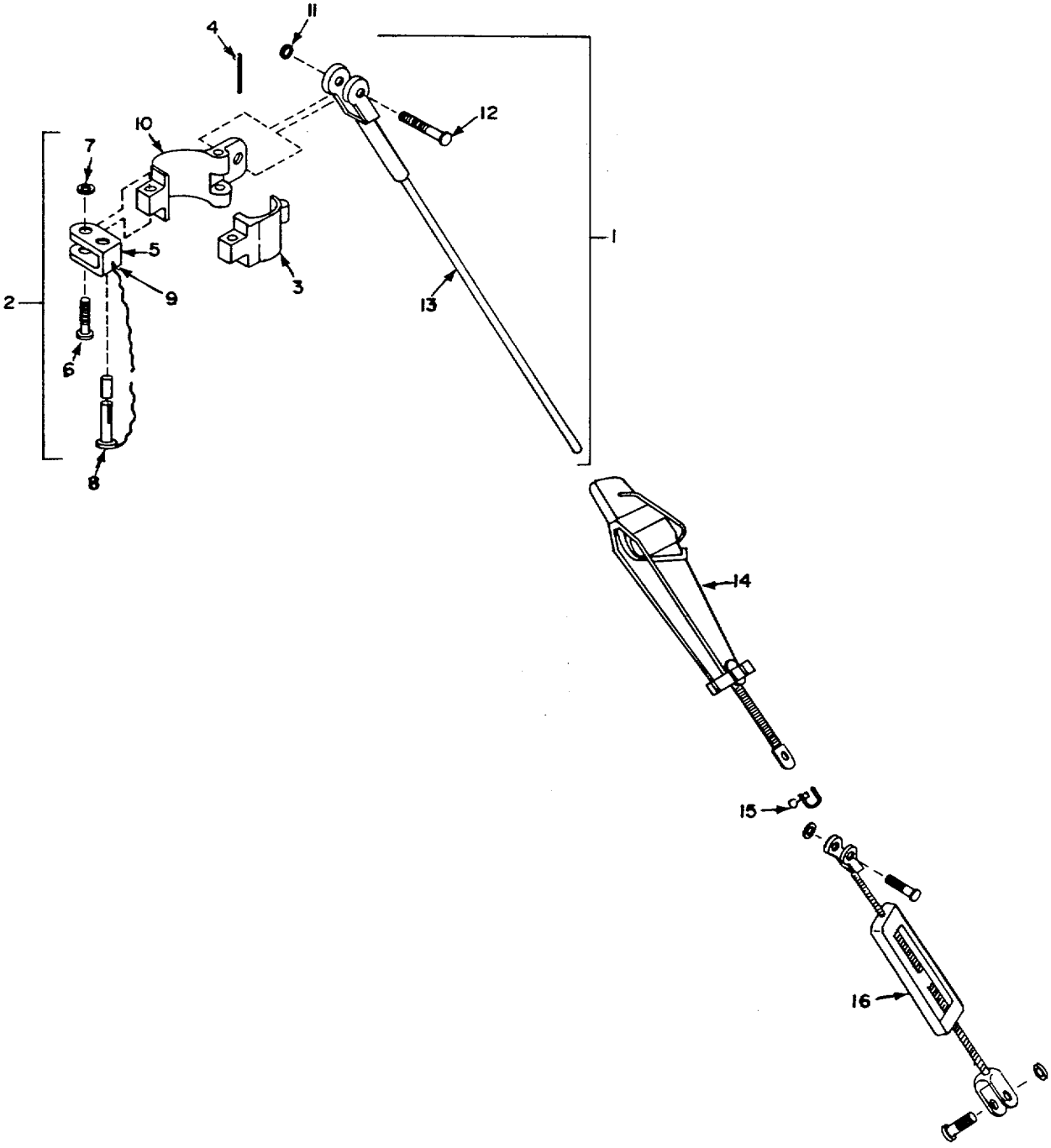
EL5AH069

Figure 10. Antenna Mounting Post Assembly.

SECTION II

TM 11-5985-348-24P

(1) ILLUSTRATION		(2)	(3)	(4)	(5)	(6)	(7)	(8)
(a) FIG NO.	(b) ITEM NO.	SMR CODE	NATIONAL STOCK NUMBER	FSCM	PART NUMBER	DESCRIPTION USABLE ON CODE	U/M	QTY INC IN UNIT
						GROUP 0106 ANTENNA MOUNTING POST ASSEMBLY		
10	1	PAOZZ	5445-00-606-3934	80063	SM-B-981887	ADAPTER..... CNX	EA	1
10	2	XDOZZ		80063	SM-B-981888-1	PIN, QUICK RELEASE CNX	EA	1
10	3	PAOZZ	5305-01-008-1090	80063	SM-B-982042	SCREW, DRIVE CNX	EA	1
10	4	PAFZZ	5445-00-611-7233	80063	SM-C-981894	COUPLER CNX	EA	2
10	5	XBFZZ		80063	SM-B-981896	CAP CNX	EA	1
10	6	XBFZZ	5315-00-664-8062	96906	MS16562-269	PIN, SPRING CNX	EA	4
10	7	XBFZZ		80063	SM-B-981898	CAP, COUPLER CNX	EA	1
10	8	XBFZZ		80063	SM-8-981897-1	BOLT, EYE CNX	EA	1
10	9	XBFZZ		80063	SM-B-981897-2	BOLT, EYE CNX	EA	1
10	10	XBFZZ		80063	SM-C-981895	BODY CNX	EA	1
10	11	PBFZZ		80063	SM-B-981899	HANDLE, SPEED CNX	EA	2
10	12	XBFZZ	5310-00-656-0114	06906	MS15795-819	WASHER, FLAT CNX	EA	2
10	13	XBFZZ		80063	SM-C-981886	MAST..... CNX	EA	1



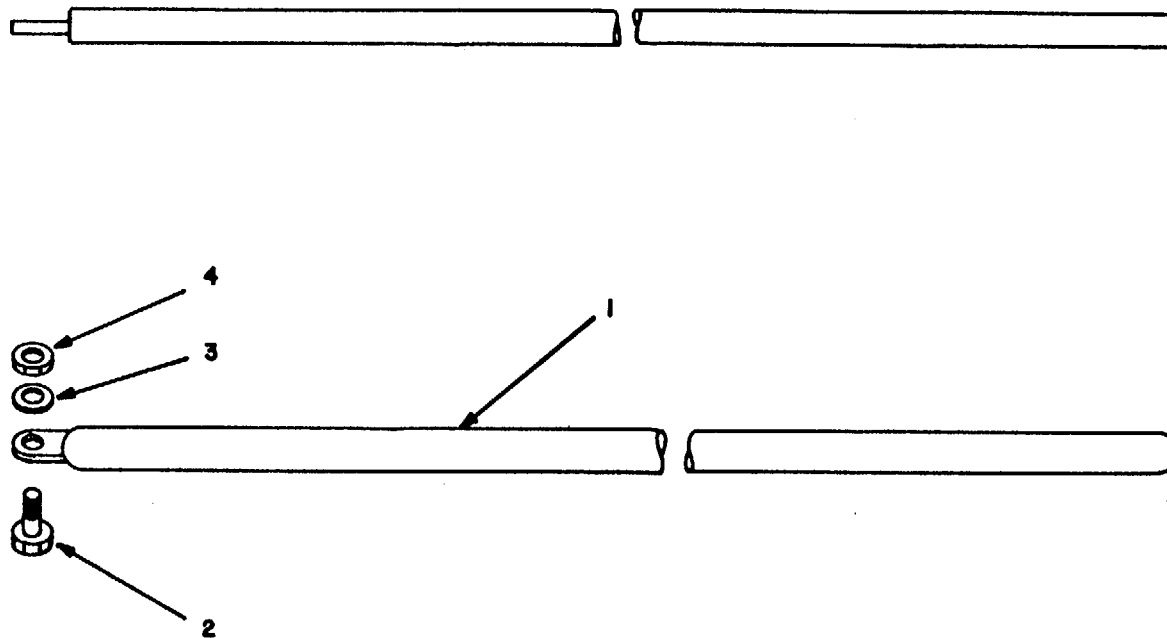
EL5AH070

Figure 11. Guy Assembly.

SECTION II

TM 11-5985-348-24P

(1) ILLUSTRATION		(2)	(3)	(4)	(5)	(6)	(7)	(8)
(a) FIG NO.	(b) ITEM NO.	SMR CODE	NATIONAL STOCK NUMBER	FSCM	PART NUMBER	DESCRIPTION USABLE ON CODE	U/M	QTY INC IN UNIT
						GROUP 0107 GUY ASSEMBLY		
11	1	PAOZZ	5445-00-606-3537	80063	SM-B-981990-1	GUY CABLE ASSY..... CNX	EA	1
11	2	XBFZZ		80063	SM-C-981945	RING, GUY ASSEMBLY..... CNX	EA	1
11	3	XBFZZ		80063	SM-B-981947	CAP..... CNX	EA	1
11	4	XBFZZ	5315-00-753-3895	96906	MS16562-256	PIN, SPRING..... CNX	EA	1
11	5	XBFZZ		80063	SM-B-981948	LOCK..... CNX	EA	1
11	6	XBFZZ	5305-00-847-1159	96906	MS35307-365	SCREW, CAP, HEXAGON H..... CNX	EA	1
11	7	XBFZZ		80063	SM-B-982040-2	NUT, SELF-LOCKIN..... CNX	EA	1
11	8	XBFZZ		80063	SM-B-9B1949	PIN, SHACKLE -053..... CNX	EA	1
11	9	XBFZZ		80063	SM-B-982042	SCREW, DRIVE..... CNX	EA	1
11	10	XBFZZ		80063	SM-B-981946	BODY..... CNX	EA	1
11	11	XBFZZ		80063	SM-B-982040-2	NUT, SELF-LOCKIN..... CNX	EA	1
11	12	XBFZZ	5305-00-021-3740	96906	MS35307-364	SCREW, CAP. HEXAGON..... CNX	EA	1
11	13	XBFZZ		80063	SM-B-982033-1	CABLE..... CNX	EA	1
11	14	PAOZZ	4030-01-008-6353	80063	SM-C-981991-1	TENSIONER..... CNX	EA	1
11	15	PAOZZ	4030-00-185-0482	80063	SM-B-981950	SHACKLE..... CNX	EA	1
11	16	PAFZZ	5340-01-151-6061	80063	SM-B-9B2092	TURNBUCKLE..... CNX	EA	20



EL5AH071

Figure 12. Antenna Stay Bar.

SECTION II

TM 11-5985-348-24P

(1) ILLUSTRATION		(2)	(3)	(4)	(5)	(6)	(7)	(8)
(a) FIG NO.	(b) ITEM NO.	SMR CODE	NATIONAL STOCK NUMBER	FSCM	PART NUMBER	DESCRIPTION USABLE ON CODE	U/M	QTY INC IN UNIT
12	1	XBOZZ		80063	SM-C-981884	GROUP 0108 ANTENNA STAYBAR		
12	2	PAOZZ	5305-00-964-0635	96906	M535307-369	STAYBAR..... CNX	EA	1
12	3	PAOZZ	5310-00-773-7618	96906	MS15795-814	SCREW.CAP, HEXAGON CNX	EA	1
12	4	PAOZZ	5310-00-655-7146	80063	SM-B-9B2040-2	WASHER, FLAT CNX	EA	1
						NUT, SELF-LOCKIN..... CNX	EA	1
27								

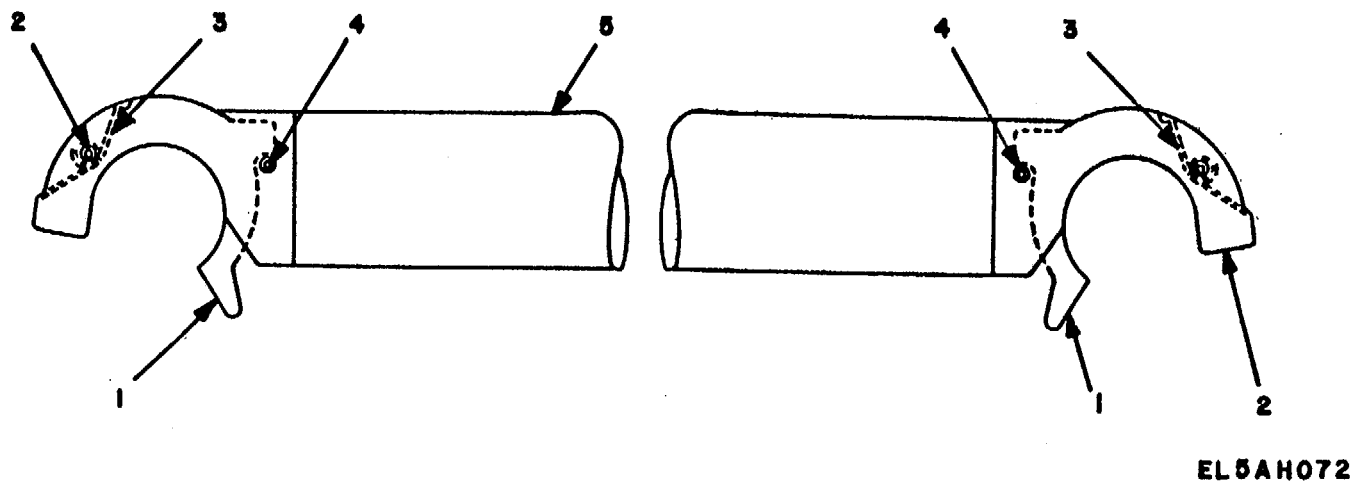
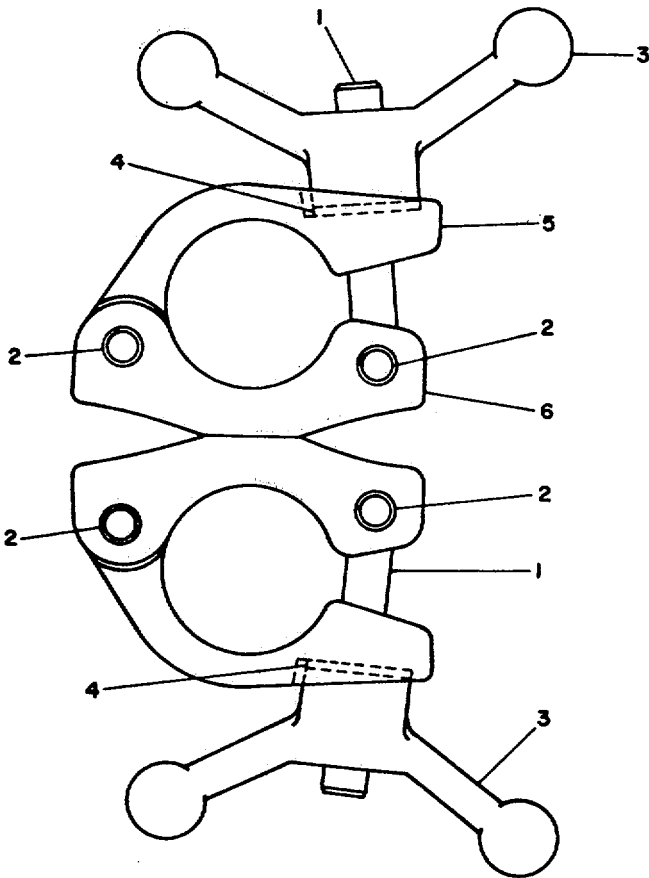


Figure 13. Horizontal Brace Assembly.

SECTION II

TM 11-5985-348-24P

(1) ILLUSTRATION		(2)	(3)	(4)	(5)	(6)	(7)	(8)
(a) FIG NO.	(b) ITEM NO.	SMR CODE	NATIONAL STOCK NUMBER	FSCM	PART NUMBER	DESCRIPTION USABLE ON CODE	U/M	QTY INC IN UNIT
						GROUP 0109 HORIZONTAL BRACE ASSEMBLY		
13	1	XBOZZ	5340-01-008-7671	80063	SM-B-981866	LATCH..... CNX	EA	2
13	2	XBOZZ	5315-00-823-8742	96906	MS16562-252	PIN, SPRING CNX	EA	2
13	3	XBOZZ	5445-00-626-9071	80063	SM-B-981867	SPRIN CNX	EA	2
13	4	XBOZZ	5315-00-753-3894	96906	MS16562-238	PIN, SPRING CNX	EA	2
13	5	XBOZZ		80063	SM-C-982079	BRACE, HORIZONTAL CNX	EA	1



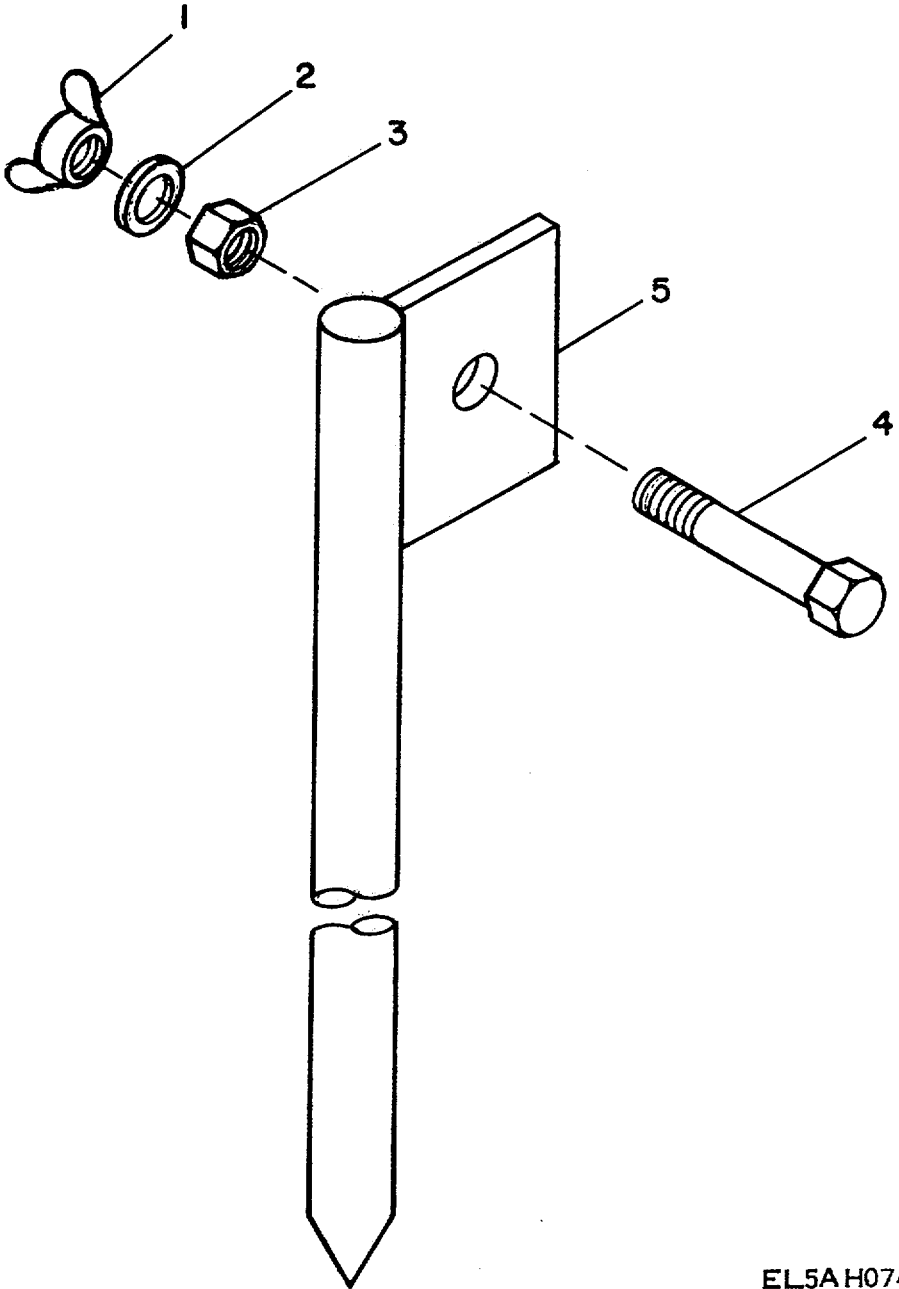
EL5AH073

Figure 14. Swivel Coupler Assembly.

SECTION II

TM 11-5985-348-24P

(1) ILLUSTRATION		(2)	(3)	(4)	(5)	(6)	(7)	(8)
(a) FIG NO.	(b) ITEM NO.	SMR CODE	NATIONAL STOCK NUMBER	FSCM	PART NUMBER	DESCRIPTION USABLE ON CODE	U/M	QTY INC IN UNIT
						GROUP 0110 SWIVEL COUPLER ASSEMBLY		
14	1	XBOZZ		80063	SM-B-981897-2	BLT, EE CNX	EA	2
14	2	XBOZZ	5315-00-664-8062	96906	MS16562-269	PIN, SPRING CNX	EA	4
14	3	PBOZZ		80063	SM-B-981899	HANDLE. SPEED CNX	EA	2
14	4	PAOZZ	5310-00-656-0114	96906	MS15795-819	WASHER, FLAT CNX	EA	2
14	5	XBOZZ		80063	SM-B-981877	CAP COUPLER CNX	EA	2
14	6	XBOZZ		80063	SM-D-982009	BODY ASSEMBLY CNX	EA	1
31								



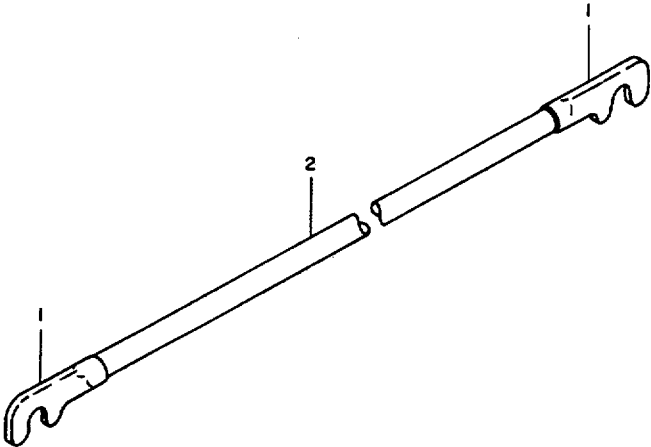
EL5A H074

Figure 15. Ground Rod Assembly.

SECTION II

TM 11-5985-348-24P

(1) ILLUSTRATION		(2)	(3)	(4)	(5)	(6)	(7)	(8)
(a) FIG NO.	(b) ITEM NO.	SMR CODE	NATIONAL STOCK NUMBER	FSCM	PART NUMBER	DESCRIPTION USABLE ON CODE	U/M	QTY INC IN UNIT
						GROUP 0111 GROUND ROD ASSEMBLY		
15	1	PAOZZ		80063	SM-B-982041-2	NUT, PLAIN. WING CNX	EA	1
15	2	PAOZZ	5310-00-045-5213	96906	MS15195-913	WASHER FLAT CNX	EA	1
15	3	XDOZZ	5310-01-028-6494	80063	SM-B-982040-1	NUT, SELF-LOCKING, HE CNX	EA	1
15	4	PAOZZ		96906	MS16200-102	SCREW MACHINE CNX	EA	1
15	5	XDOZZ	5975-00-519-6166	80063	SM-B-982016	ROD, GROUND CNX	EA	1



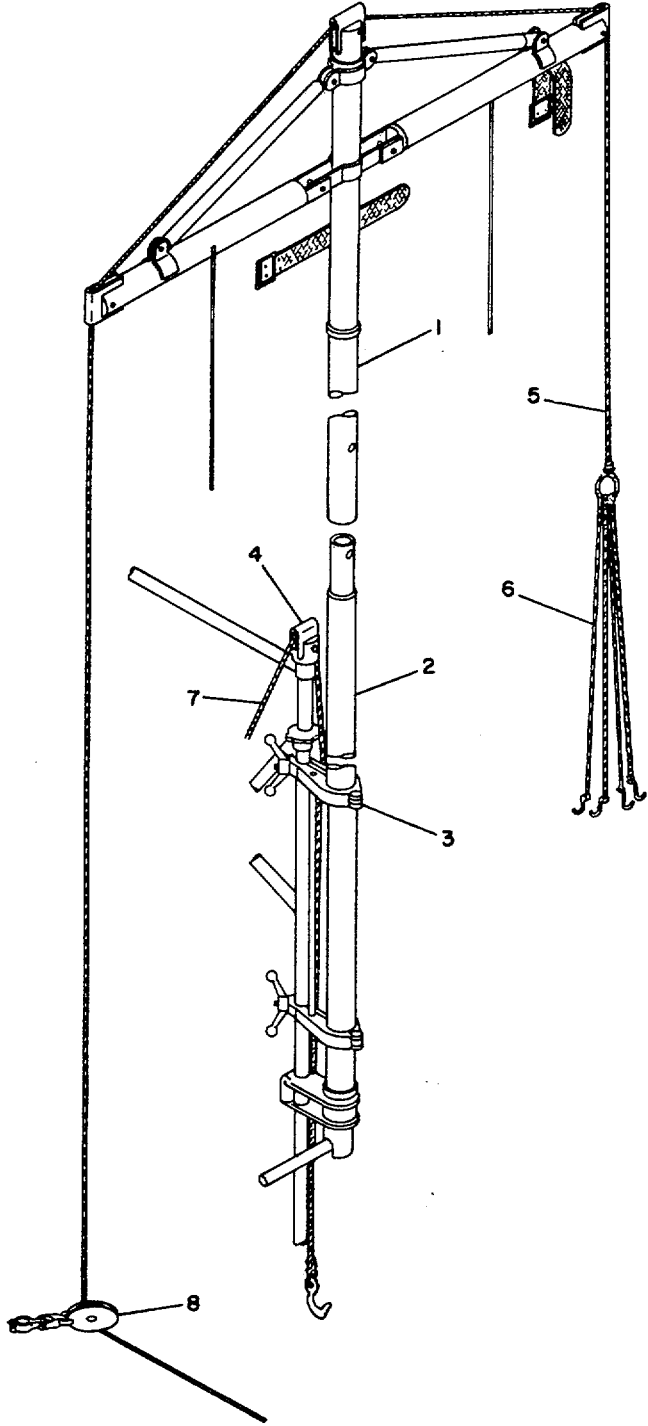
EL5AHO75

Figure 16. Lead, Electrical.

SECTION II

TM 11-5985-348-24P

(1) ILLUSTRATION		(2)	(3)	(4)	(5)	(6)	(7)	(8)
(a) FIG NO.	(b) ITEM NO.	SMR CODE	NATIONAL STOCK NUMBER	FSCM	PART NUMBER	DESCRIPTION USABLE ON CODE	U/M	QTY INC IN UNIT
16	1	XBFZZ		80063	SM-B-982014	GROUP 0112 LEAD ELECTRICAL		
16	2	XBFZZ		80063	SM-B-982013	CLAMP. ELECTRICAL CNX BRAID, WIRE CNX	EA EA	2 1
35								



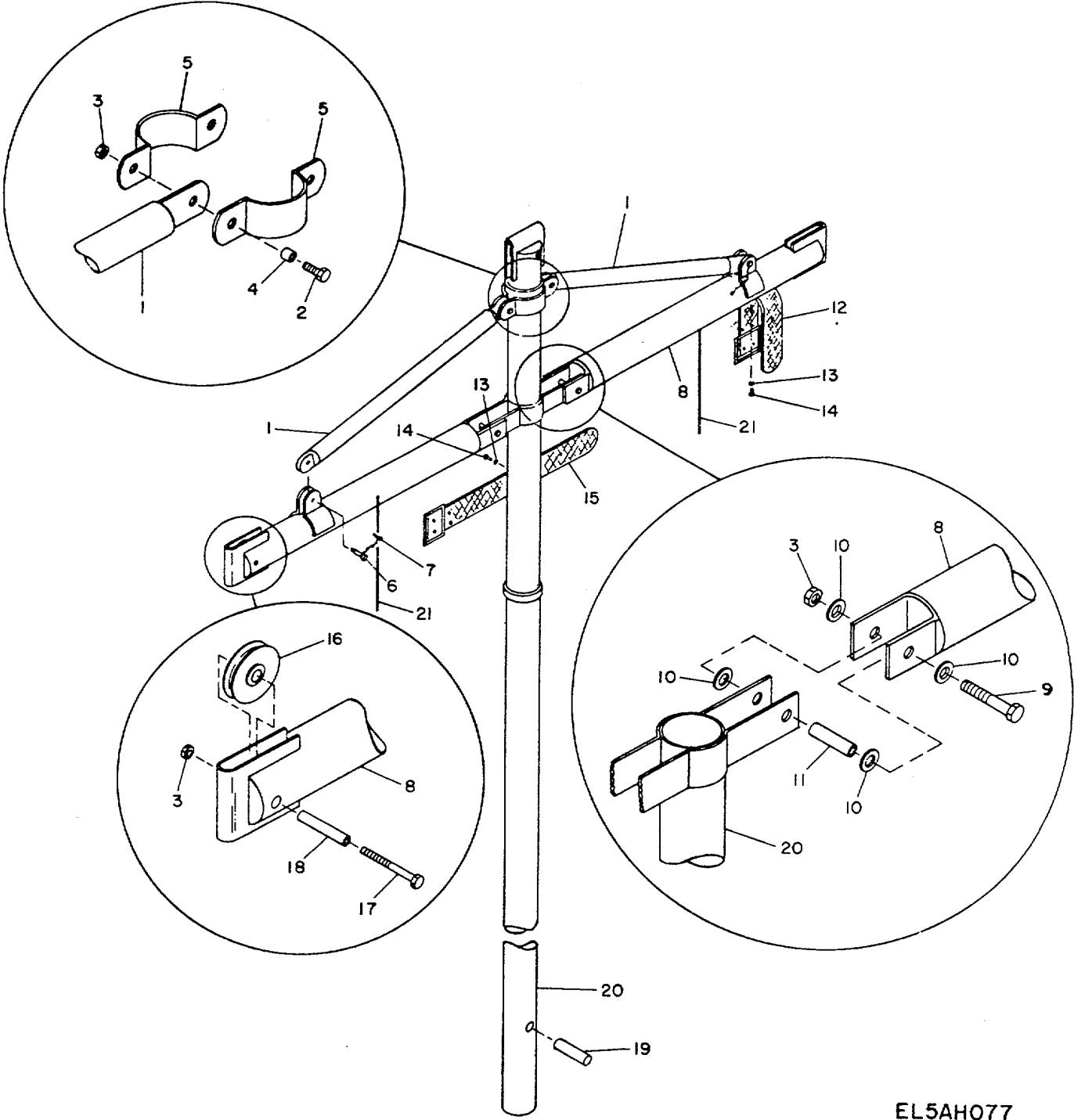
EL5AH076

Figure 17. Davit Assembly.

SECTION II

TM 11-5985-348-24P

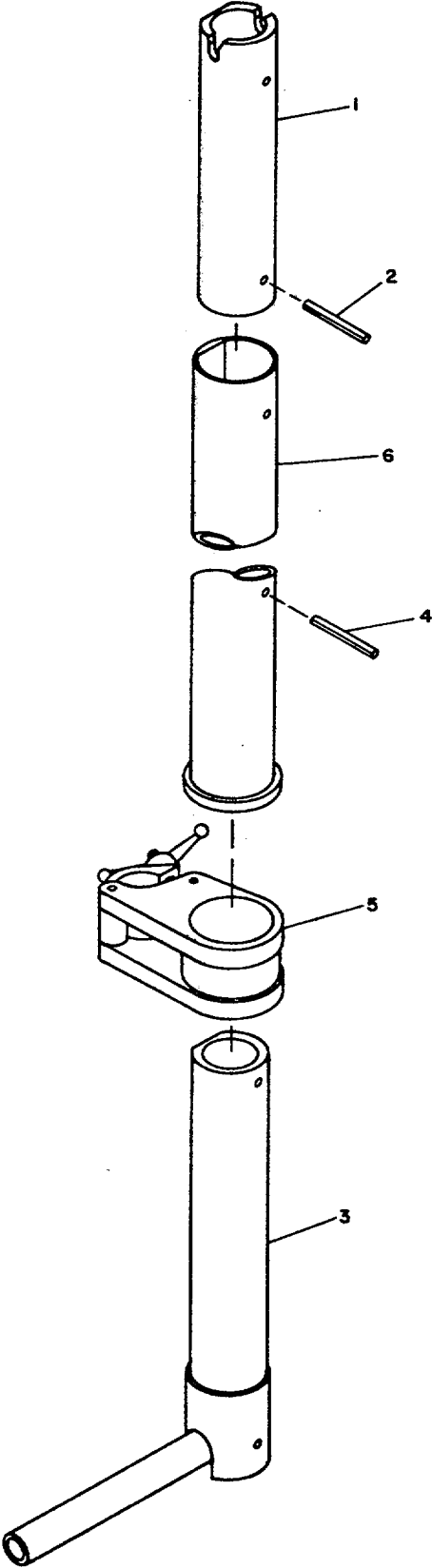
(1) ILLUSTRATION		(2)	(3)	(4)	(5)	(6)	(7)	(8)
(a) FIG NO.	(b) ITEM NO.	SMR CODE	NATIONAL STOCK NUMBER	FSCM	PART NUMBER	DESCRIPTION USABLE ON CODE	U/M	QTY INC IN UNIT
						GROUP 0113 DAVIT ASSEMBLY		
17	1	AFOHH		80063	SM-0981929	DAVIT ASSEMBL CNX	EA	1
17	2	AFFHD		80063	SM-D-91930	DAVIT ASSEMBL..... CNX	EA	1
17	3	PAOZZ	5445-00-606-3538	80063	SM-C-982021	COUPLER, RETAINING CNX	EA	2
17	4	PAFZZ	5445-00-622-7440	80063	SM-C-981934	PULLEY, PIN ASSY CNX	EA	1
17	5	XDFZZ		80063	SM-B-981933	FIBER ROPE ASSEMBLY CNX	EA	1
17	6	PAFZZ	3940-01-005-3314	80063	SM-C-981977	SLING, MULTIPLE LEG CNX	EA	1
17	7	XDFZZ		80063	SM-B-981932	FIBER ROPE ASSEMBLY CNX	EA	1
17	8	AOODD		80063	SM-C-981931	BLOCK, TACKLE CNX	EA	1



EL5AH077

Figure 18. Upper Davit Assembly.

(1) ILLUSTRATION		(2)	(3)	(4)	(5)	(6)	(7)	(8)
(a) FIG NO.	(b) ITEM NO.	SMR CODE	NATIONAL STOCK NUMBER	FSCM	PART NUMBER	DESCRIPTION USABLE ON CODE	U/M	QTY INC IN UNIT
						GROUP 011301 UPPER DAVIT ASSEMBLY		
18	1	PAFZZ	5975-01-028-9487	80063	SM-B-981937	BRACE, CROSSARM CNX	EA	2
18	2	PAFZZ	5305-00-576-5417	96906	MS35307-360	SCREW, CAP, HEXAGON CNX	EA	2
16	3	PAFZZ	5310-00-655-7146	80063	SM-B-982040-2	NUT, SELF-LOCKIN CNX	EA	7
18	4	PAFZZ	5445-00-622-7465	80063	SM-B-981939-3	SLEEVE CNX	EA	2
18	5	XBHZZ		80063	SM-B-981938	HINGE, BRACE CNX	EA	2
18	6	XDFZZ	5340-01-029-9079	80063	SM-B-981888-2	PIN, QUICK RELEASE CNX	EA	2
18	7	PAFZZ	5305-01-008-1090	80063	SM-B-982042	SCREW, DRIVE CNX	EA	2
18	8	PAFZZ	5445-00-610-1504	80063	SM-C-981936	CROSS, ARM CNX	EA	2
18	9	PAFZZ	5305-00-879-8351	96906	MS35307-371	SCREW, CAP, HEXAGON CNX	EA	2
18	10	PAFZZ	5310-00-773-7618	96906	MS15795-814	WASHER, FLAT CNX	EA	8
18	11	PAFZZ	5445-00-606-3883	80063	SM-B-9B1939-2	SLEEVE CNX	EA	2
18	12	XBFBZZ		80063	SM-B-981958-1	STRAP-WEBBING CNX	EA	1
18	13	XBFBZZ	5310-00-550-5054	96906	MS15795-809	WASHER-FLAT CNX	EA	4
18	14	XBFBZZ		80063	SM-B-982044	RIVET CNX	EA	4
18	15	XBFBZZ		80063	SM-B-981958-2	STRAP, WEBBING CNX	EA	1
18	16	XBFBZZ		80063	SM-B-981952	SHEAVE CNX	EA	3
18	17	XBFBZZ	5305-00-879-2736	96906	MS35307-372	SCREW, CAP, HEXAGON CNX	EA	3
18	18	XBFBZZ		80063	SM-9B1939-1	SLEEVE CNX	EA	3
18	19	PAFZZ	5315-00-058-9834	96906	MS16562-271	PIN, SPRING CNX	EA	1
18	20	XBFBZZ		80063	SM-D-981935	SHAFT, DAVIT, UPPER CNX	EA	1



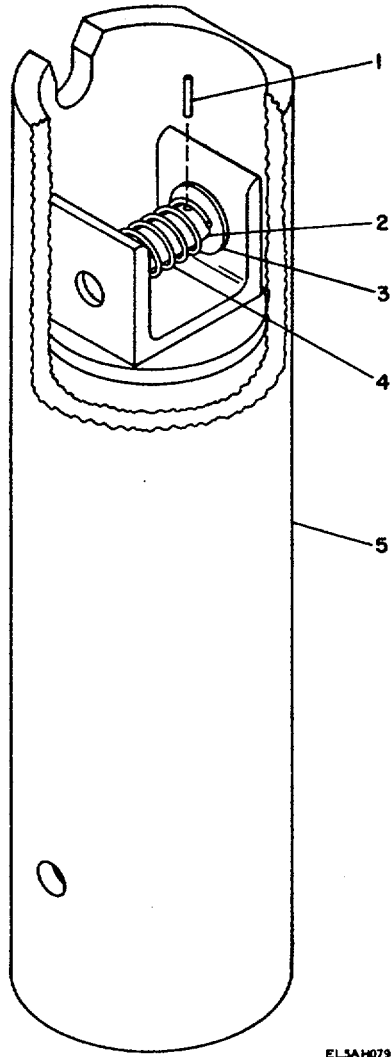
EL5AH078

Figure 19. Lower Davit Assembly.

SECTION II

TM 11-5985-348-24P

(1) ILLUSTRATION		(2)	(3)	(4)	(5)	(6)	(7)	(8)
(a) FIG NO.	(b) ITEM NO.	SMR CODE	NATIONAL STOCK NUMBER	FSCM	PART NUMBER	DESCRIPTION USABLE ON CODE	U/M	QTY INC IN UNIT
19	1	XBFZZ		80063	SM-C-981940	GROUP 011302 LOWER DAVIT ASSEMBLY		
19	2	PAFZZ	5315-00-058-9834	96906	MS16562-271	TUBE ASSEMBL CNX	EA	1
19	3	PAFZZ	5445-00-606-3681	80063	SM-B-981941	PIN. SPRING CNX	EA	3
19	4	AFFHD		80063	SM-C-98B942	HANDLE ASSEMBLY CNX	EA	1
19	5	XBFZZ		80063	SM-B-982029	COUPLER, SUPPORT CNX	EA	1
						SHAFT, DAVIT, LOWER CNX	EA	1
41								



EL5AH079

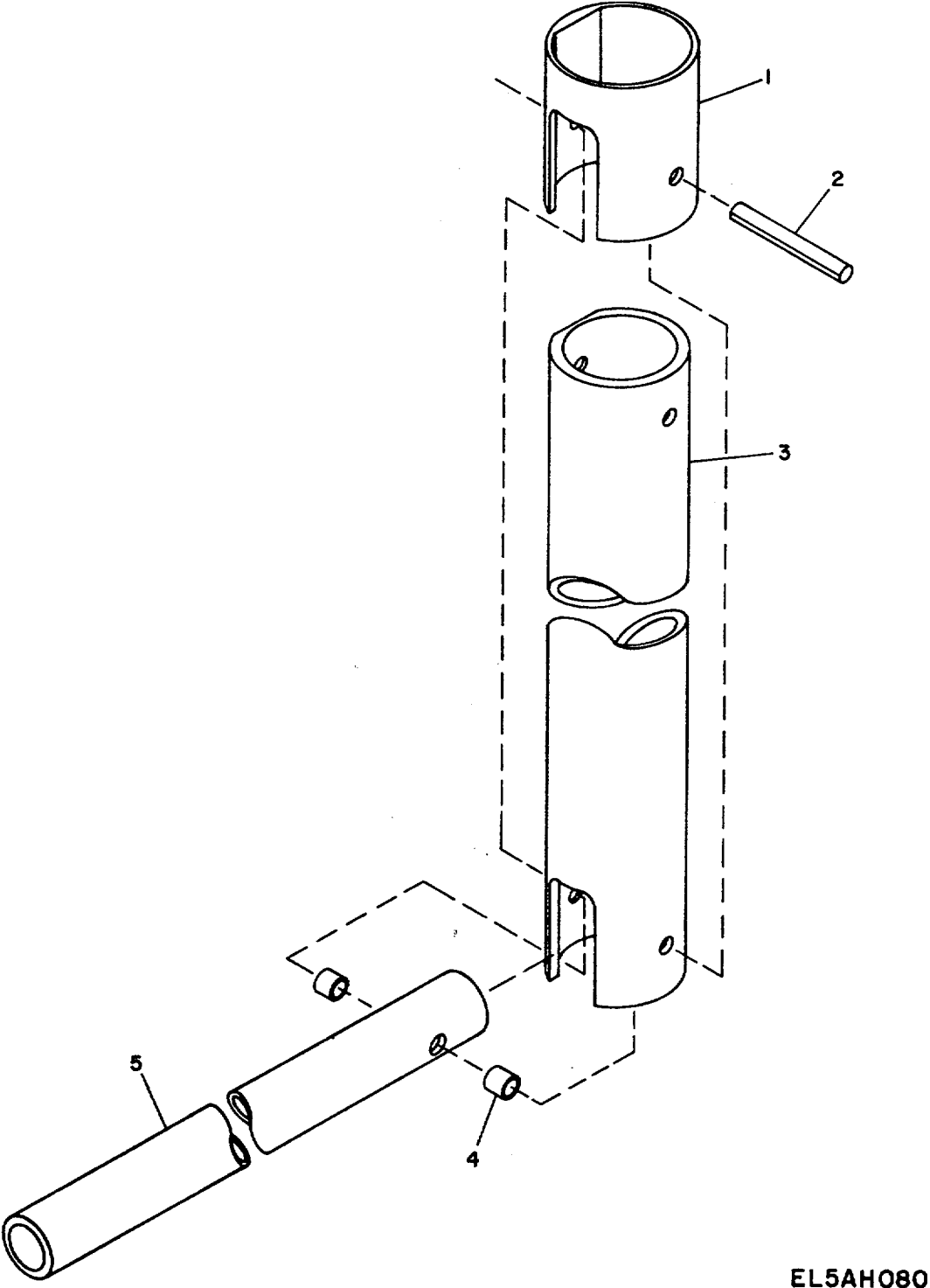
EL5AH079

Figure 20. Splice Tube Assembly.

SECTION II

TM 11-5985-348-24P

(1) ILLUSTRATION		(2)	(3)	(4)	(5)	(6)	(7)	(8)
(a) FIG NO.	(b) ITEM NO.	SMR CODE	NATIONAL STOCK NUMBER	FSCM	PART NUMBER	DESCRIPTION USABLE ON CODE	U/M	QTY INC IN UNIT
20	1	XBFZZ	5315-00-853-0681	96906	MS16562-201	GROUP 01130201 SPLICE TUBE ASSEMBLY		
20	2	XBFZZ		80063	SM-B-981973	PIN.SPRING CNX	EA	1
20	3	XBFZZ	5310-00-582-5677	96906	MS15795-810	PIN CNX	EA	1
20	4	XBFZZ		80063	SM-B- 981974	WASHER, FLAT CNX	EA	1
20	5	XBFZZ		80063	SM-C-9B2020	SPRIN..... CNX	EA	1
						TUBE.SPLICE CNX	EA	1
43								



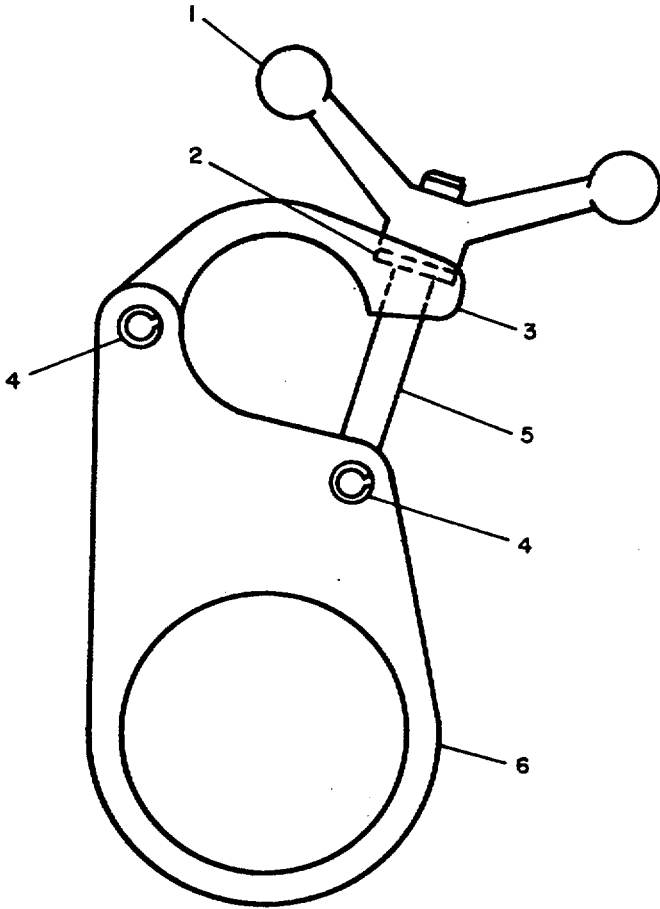
EL5AH080

Figure 21. Handle Assembly.

SECTION II

TM 11-5985-348-24P

(1) ILLUSTRATION		(2)	(3)	(4)	(5)	(6)	(7)	(8)
(a) FIG NO.	(b) ITEM NO.	SMR CODE	NATIONAL STOCK NUMBER	FSCM	PART NUMBER	DESCRIPTION USABLE ON CODE	U/M	QTY INC IN UNIT
21	1	XBFZZ	5315-00-058-9834	80063	SM-B-981963	GROUP 01130202 HANDLE ASSEMBLY		
21	2	PAFZZ		96906	MS16562-271	SLEEVE..... CNX	EA	1
21	3	XBFZZ		80063	SM-B-981962	PIN, SPRING..... CNX	EA	1
21	4	XBFZZ		80063	SM-B-981954	TUBE HANDLE INSERT..... CNX	EA	1
21	5	XBFZZ		80063	SM-B-981961	SPACER..... CNX	EA	2
						HANDLE..... CNX	EA	1
45								



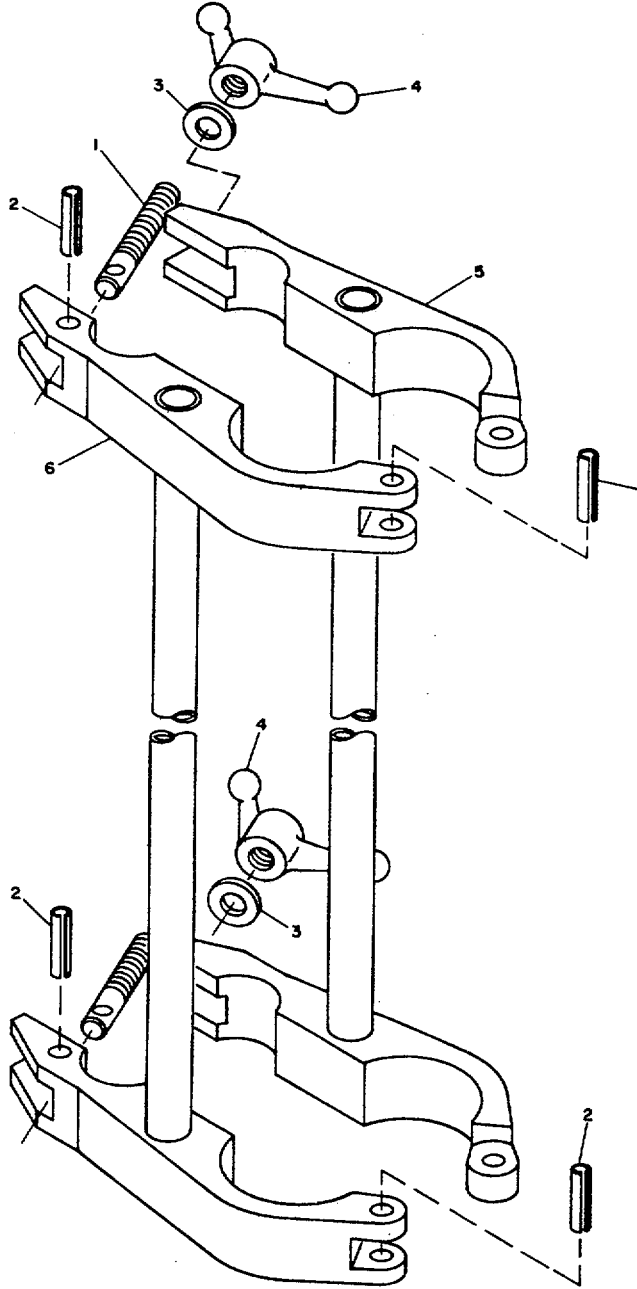
EL5A H08I

Figure 22. Support Coupler Assembly.

SECTION II

TM 11-5985-348-24P

(1) ILLUSTRATION		(2)	(3)	(4)	(5)	(6)	(7)	(8)
(a) FIG NO.	(b) ITEM NO.	SMR CODE	NATIONAL STOCK NUMBER	FSCM	PART NUMBER	DESCRIPTION USABLE ON CODE	U/M	QTY INC IN UNIT
						GROUP 01130203 SUPPORT COUPLER ASSEMBLY		
22	1	XBOZZ		80063	SM-B-981899	HANDLE, SPEED CNX	EA	1
22	2	PAFZZ	5310-00-614-3505	96906	MS15795-820	WASHER.FLAT CNX	EA	1
22	3	PAFZZ	5445-00-626-9071	80063	SM-B-981967	CAP. COUPLER CNX	EA	1
22	4	PAFZZ	5315-00-844-0498	96906	MS16562-264	PIN, SPRING CNX	EA	2
22	5	XBOZZ		80063	SM-B-981897-2	BOLT, EYE CNX	EA	1
22	6	XBHZZ		80063	SM-C-982019	BODY, COUPLER CNX	EA	1
47								



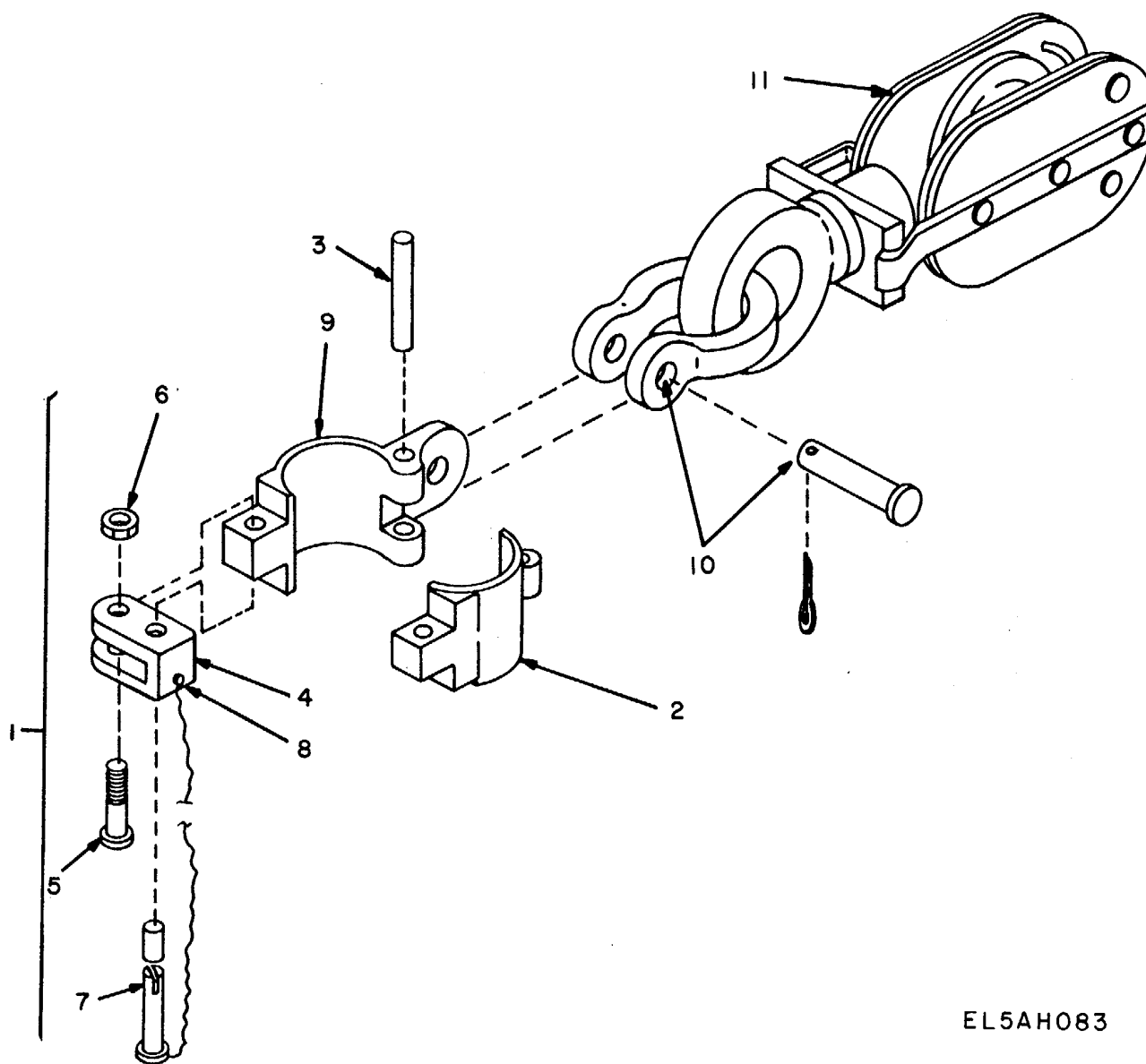
EL5AH082

Figure 23. Retaining Coupler.

SECTION II

TM 11-5985-348-24P

(1) ILLUSTRATION		(2)	(3)	(4)	(5)	(6)	(7)	(8)
(a) FIG NO.	(b) ITEM NO.	SMR CODE	NATIONAL STOCK NUMBER	FSCM	PART NUMBER	DESCRIPTION USABLE ON CODE	U/M	QTY INC IN UNIT
						GROUP 011303 RETAINING COUPLER		
23	1	XBOZZ		80063	SM-B-981897-2	BOLT, EYE CNX	EA	2
23	2	XBOZZ	5315-00-984-2645	96906	MS16562-262	PIN, SPRING CNX	EA	4
23	3	PBFZZ	5310-00-614-3505	96906	MS15795-820	WASHER, FLAT CNX	EA	2
23	4	PBFZZ		80063	SM-B-981899	HANDLE, SPEED CNX	EA	2
23	5	XBOZZ		80063	SM-C-982022	CLAMP, LEFT HAND CNX	EA	1
23	6	XBOZZ		80063	SM-C-982023	CLAMP, RIGHT HAND CNX	EA	1
49								



EL5AH083

Figure 24. Tackle Block Assembly.

SECTION II

TM 11-5985-348-24P

(1) ILLUSTRATION		(2)	(3)	(4)	(5)	(6)	(7)	(8)
(a) FIG NO.	(b) ITEM NO.	SMR CODE	NATIONAL STOCK NUMBER	FSCM	PART NUMBER	DESCRIPTION USABLE ON CODE	U/M	QTY INC IN UNIT
						GROUP 011304 TACKLE BLOCK ASSEMBLY		
24	1	PAOZZ	5445-00-622-7456	80063	SM-C-981945	RING, GUY ASSEMBLY CNX	EA	1
24	2	XBOZZ		80063	SM-B-981947	CAP CNX	EA	1
24	3	XBOZZ	5315-00-753-3895	96906	M516562-256	PIN.SPRING CNX	EA	1
24	4	XBOZZ		80063	SM-B-981948	LOCK..... CNX	EA	1
24	5	XBOZZ	5305-00-847-1159	96906	MS35307-365	SCREW.CAP, HEXAGON H CNX	EA	1
24	6	XBOZZ		80063	SH-B-982040-2	NUT SELF-LOCKIN CNX	EA	1
24	7	XBOZZ		80063	SM-B-981949	PIN.SHACKLE CNX	EA	1
24	8	XBOZZ		80063	SM-B-982042	SCREW, DRIVE CNX	EA	1
24	9	XBOZZ		80063	SM-B-981946	BOGY CNX	EA	1
24	10	PAOZZ	4030-00-185-0482	B0063	SM-B-9B1950	SHACKLE CNX	EA	1
24	11	PAOZZ	3940-01-005-38B7	80063	SM-C-981944	BLOCK, TACKLE..... CNX	EA	1
51/(52 blank)								

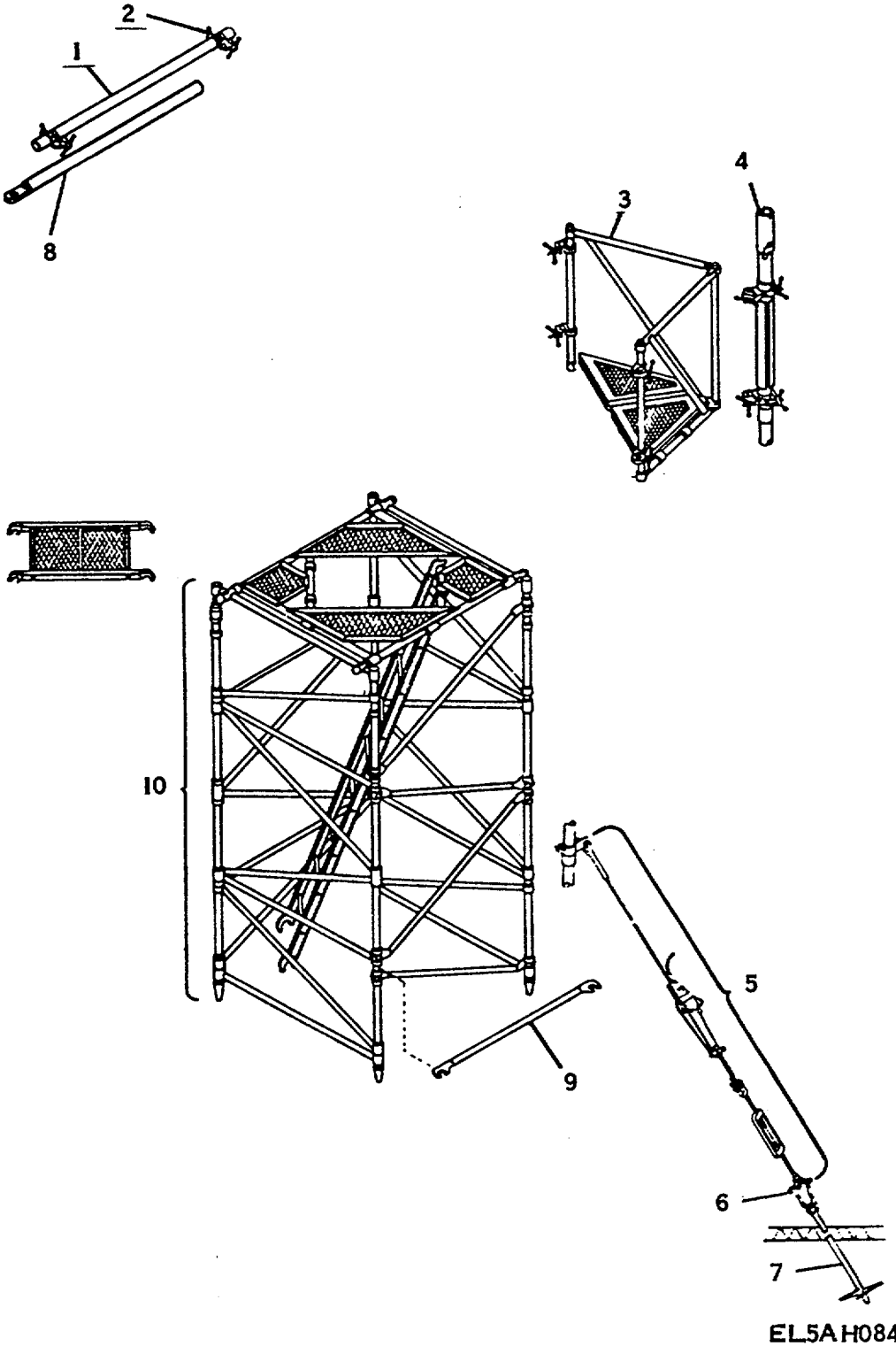
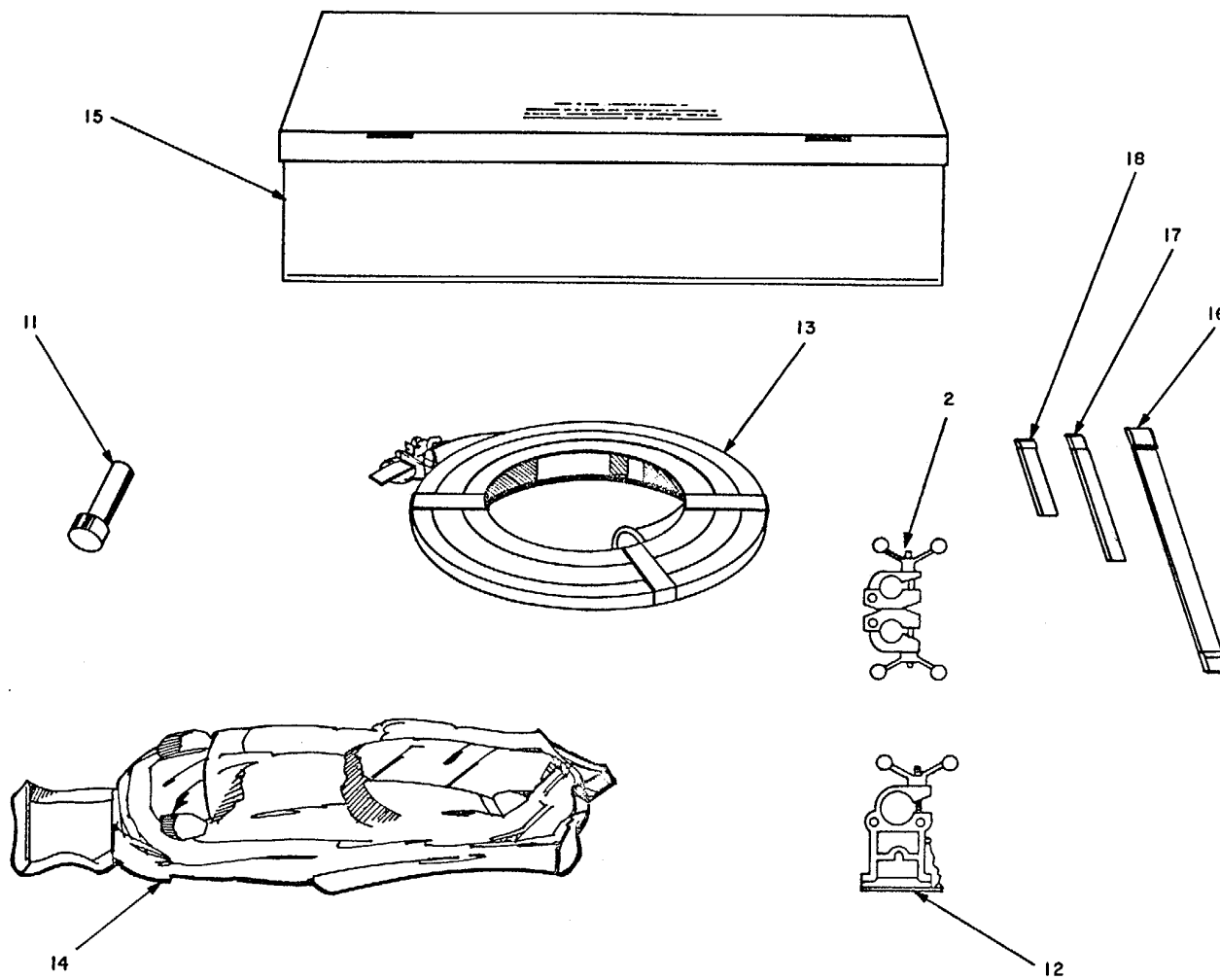


Figure 25. Tower Extension AB-1221/G (Sheet 1 of 2).



EL5AH085

Figure 25. Tower Extension AB-12211G (Sheet 2 of 2).

SECTION II

TM 11-5985-348-24P

(1) ILLUSTRATION		(2)	(3)	(4)	(5)	(6)	(7)	(8)
(a) FIG NO.	(b) ITEM NO.	SMR CODE	NATIONAL STOCK NUMBER	FSCM	PART NUMBER	DESCRIPTION USABLE ON CODE	U/M	QTY INC IN UNIT
						GROUP 02 TOWER EXTENSION AB-1221/G		
25	1	PAOZZ	5445-00-610-1501	80063	SM-B-982032	BRACE, AUXILIARY HOR CN5	EA	8
25	2	PBOZZ	5445-00-611-7228	80063	SM-C-982010	COUPLER SWIVEL CN5	EA	32
25	3	PDDHH	5445-00-629-5589	80063	SM-D-98178 6	A FRAME CN5	EA	4
25	4	PDDDD	5445-00-626-9009	80063	SM-D-9817B7	POST, ANTENNA CN5	EA	4
25	5	PDDDD	5445-00-626-9023	80063	SM-D-982095	GUY ASSEMBLY CN5	EA	8
25	6	PAOZZ	5445-00-626-9023	80063	SM-D-982007	CLEVIS, ANCHOR CN5	EA	4
25	7	PAOZZ	4030-01-008-1217	80063	SM-B-982006-2	ANCHOR, GUY CN5	EA	4
25	8	PBOZZ	5445-00-610-1348	80063	SM-C-9818B3	STAYBAR ASSEMBLY CN5	EA	8
25	9	PAOZA	5445-01-017-6184	80063	SM-C-982080	BRACE, HORIZONTAL CN5	EA	6
25	10	PDDDD	5445-00-610-9010	80063	SM-D-981784	SECTION TOWER CN5	EA	3
25	11	PAOZZ	5445-00-606-3858	80063	SM-B-9B1779	GUY CABLE ASSY CN5	EA	8
25	12	PBOZA		96906	SMC981790	CLAMP, WAVEGUIDE CN5	EA	88
25	13	PBOZZ	5985-00-954-4940	80063	XMD558272-1	WAVEGUIDE ASSEMBLY CN5	EA	28
25	14	PAOZZ	5445-01-009-4357	80063	SM-B-9B2004	BAG, ACCESSORY CN5	EA	5
25	15	PAOZZ		80063	SM-D-9B1772	BIN, WAVEGUIDE CN5	EA	2
25	16	XBOZZ	5340-01-029-9169	80063	SM-B-981958-4	STRAP, WEBBING CN5	EA	17
25	17	PAOZZ	5340-01-151-4106	80063	SM-B-981958-5	STRAP TRANSIT CN5	EA	6
25	18	PAOZZ	5340-01-151-4105	80063	SM-B-981958-3	STRAP. TRANSIT CN5	EA	4

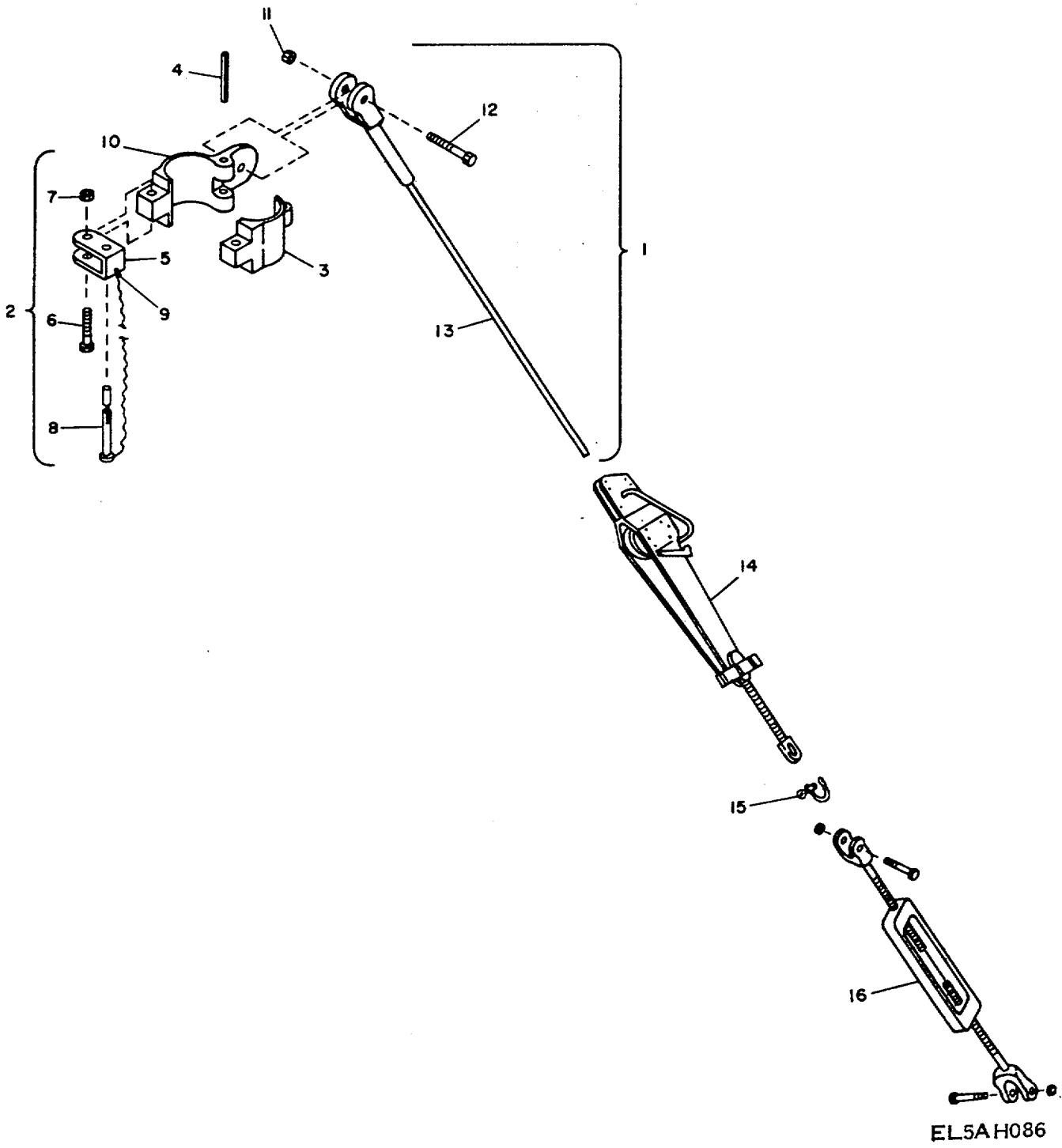
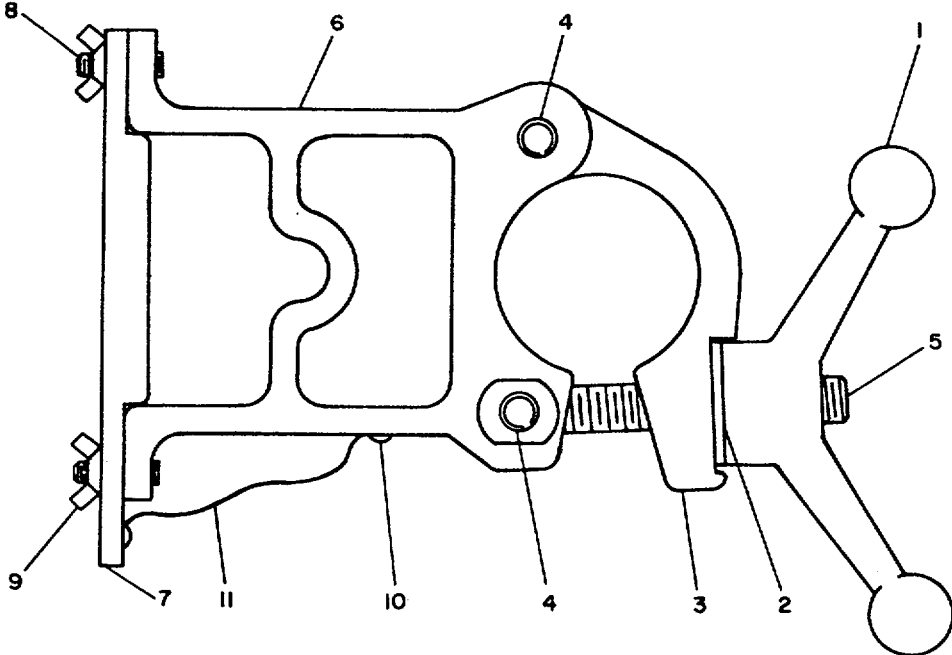


Figure 26. Guy Assembly.

SECTION II

TM 11-5985-348-24P

(1) ILLUSTRATION		(2)	(3)	(4)	(5)	(6)	(7)	(8)
(a) FIG NO.	(b) ITEM NO.	SMR CODE	NATIONAL STOCK NUMBER	FSCM	PART NUMBER	DESCRIPTION USABLE ON CODE	U/M	QTY INC IN UNIT
						GROUP 0201 GUY ASSEMBLY		
26	1	PDODD	5445-00-606-3878	80063	SM-8 982087	CABLE ASSEMBLY CN5	EA	1
26	2	XBFZZ		80063	SN-C-981945	RING,GUY ASSEMBLY CN5	EA	1
26	3	XBFZZ		80063	SM-8-981947	CAP CN5	EA	1
26	4	XBFZZ	5315-00-753-3895	96906	MS16562-256	PIN,SPRING CN5	EA	1
26	5	XBFZZ		80063	SM-B-981948	LOCK CN5	EA	1
26	6	XBFZZ	5305-00-847-1159	96906	MS35307-365	SCREW,CAP,HEXAGON H..... CN5	EA	1
26	7	XBFZZ		80063	SM-8-982040-2	NUT,SELF-LOCKIN CN5	EA	1
26	8	XBFZZ		80063	SM-8-981949	PIN SHACKLE CN5	EA	1
26	9	XBFZZ		80063	SM-B-982042	SCREW DRIVE CN5	EA	1
26	10	XBFZZ		80063	SM-B-981946	BODY CN5	EA	1
26	11	XBFZZ		80063	SM-8-982040-2	NUT,SELF-LOCKIN CN5	EA	1
26	12	XBFZZ	5305-00-021-3740	96906	MS35307-364	SCREW,CAP.HEXAGON CN5	EA	1
26	13	XBFZZ		80063	SM-B-982033-2	CABLE CN5	EA	1
26	14	PAOZZ	4030-01-008-6353	80063	SM-C-981991-2	TENSIONER..... CN5	EA	1
26	15	PBOZZ	4030-00-185-0482	80063	SH-B-981950	SHACKLE..... CN5	EA	1
26	16	PAFZZ	5340-01-151-6061	80063	SM-B-982092	TURNBUCKLE CN5	EA	8



EL5AH087

Figure 27. Waveguide Clamp.

SECTION II

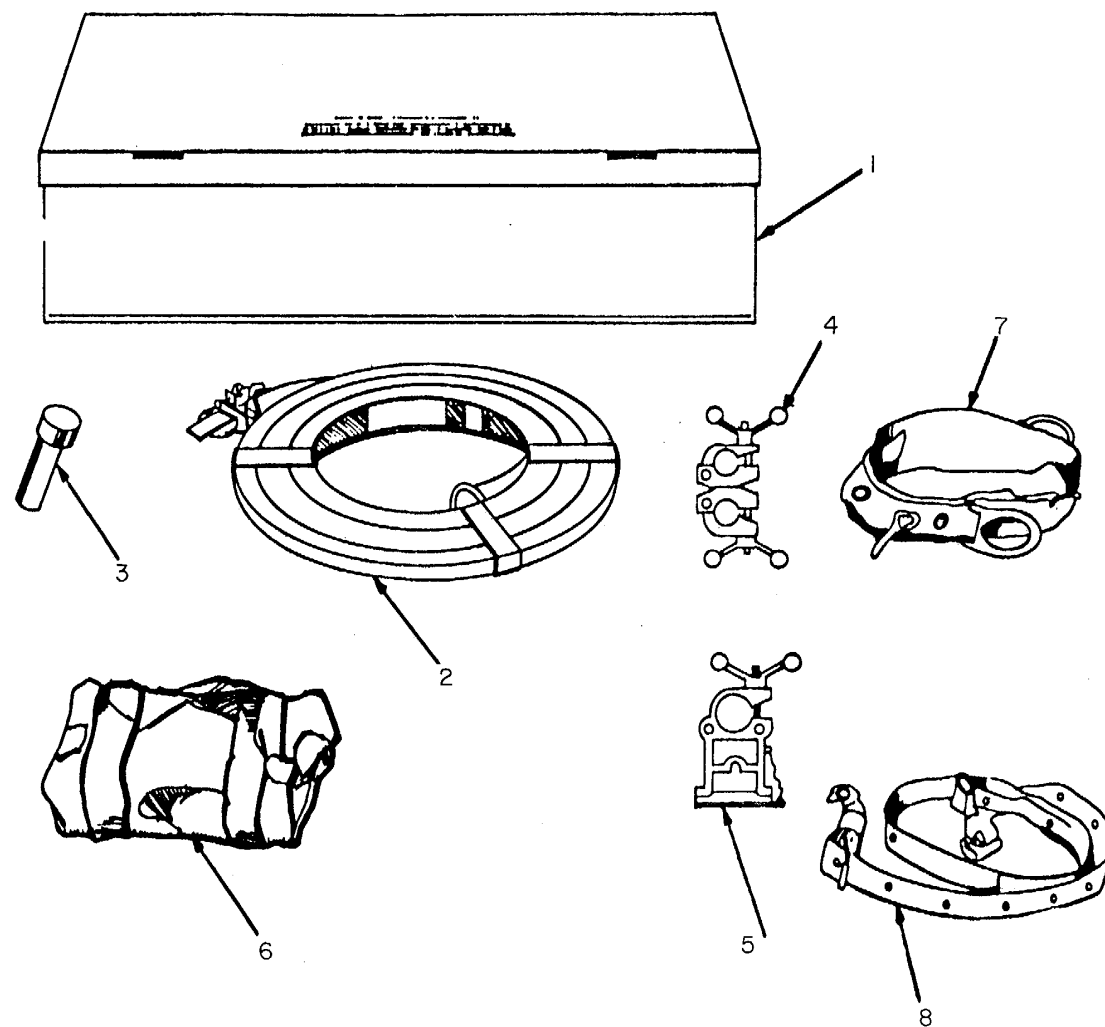
TM 11-5985-348-24P

(1) ILLUSTRATION		(2)	(3)	(4)	(5)	(6)	(7)	(8)
(a) FIG NO.	(b) ITEM NO.	SMR CODE	NATIONAL STOCK NUMBER	FSCM	PART NUMBER	DESCRIPTION USABLE ON CODE	U/M	QTY INC IN UNIT
						GROUP 0202 WAVEGUIDE CLAMP		
27	1	PBFZZ		80063	SM-8-981899	HANDLE,SPEED CN5	EA	1
27	2	PAFZZ	5310-00-656-0114	96906	MS15795-819	WASHER,FLAT CN5	EA	1
27	3	XBFZZ		80063	SM-B-981898	CAP,COUPLER CN5	EA	1
27	4	XBFZZ		96906	MS16562-271	PIN,SPRING CN5	EA	2
27	5	XBFZZ		80063	SM-B-981897-3	BOLT,EYE CN5	EA	1
27	6	XBFZZ		96906	SMC982047	BODY CN5	EA	1
27	7	XBFZZ		80063	SM-B-982048	PLATE CN5	EA	1
27	8	XBFZZ	5315-00-058-9698	96906	MS16592-191	PIN,SPRNG CN5	EA	2
27	9	XBFZZ		80063	SM-B-982041-1	NUT,PLAIN,WING CN5	EA	2
27	10	AOFZA	5305-01-008-1090	80063	SM-B-982042	SCREW,DRIVE CN5	EA	2
27	11	PAFZZ		80063	SM-B-981893	LANYARD CN5	EA	1

SECTION II

TM 11-5985-348-24P

(1) ILLUSTRATION		(2)	(3)	(4)	(5)	(6)	(7)	(8)
(a) FIG NO.	(b) ITEM NO.	SMR CODE	NATIONAL STOCK NUMBER	FSCM	PART NUMBER	DESCRIPTION USABLE ON CODE	U/M	QTY INC IN UNIT
						GROUP 0203 WAVEGUIDE STORAGE BIN		
28	1	XBOZZ		80063	SH-C-982068	PLATE, INSTRUCTION CN5	EA	1
28	2	XBOZZ	5320-00-754-0822	88044	AN470AD4-5	RIVET, SOLID CN5	EA	4
28	3	XBOZZ		80063	SM-B-982061	LATCH CN5	EA	2
28	4	PAOZZ	5305-00-054-5651	96906	MS16200-17	SCREW,MACHINE PAN..... CN5	EA	4
28	5	PAOZZ	5310-00-595-6211	96906	MS15795-803	WASHER,FLAT CN5	EA	4
28	6	PAOZZ		96906	MS2E042-44	NUT,SELF-LOCKING CN5	EA	4
28	7	XBOZZ	5320-00-117-6950	96906	MS20426AD4-5	RIVET CN5	EA	4
28	8	XBOZZ		80063	SM-B-982028	SPACER,LATCH CN5	EA	2
28	9	XBOZZ	5320-00-117-6828	88044	AN470A046	RIVET,SOLID CN5	EA	4
28	10	XBOZZ		96906	MS20470AD4-9	RIVET CN5	EA	4
28	11	XBOZZ		80063	SH-C-981987	STAY CN5	EA	2
28	12	XBOZZ	5315-00-844-0342	96906	MS16562-250	PIN,SPRING CN5	EA	2
28	13	XBOZZ	5305-01-032-3498	80063	SM-B-982065	SCREW, SHOULDER..... CN5	EA	2
28	14	XBOZZ		80063	SM-D-981889	COVER CN5	EA	1
28	15	PAOZZ	5305-00-247-1325	96906	MS35234-65	SCREW, MACHINE CN5	EA	20
28	16	PAOZZ	5310-00-619-1148	96906	MS15795-808	WASHER,FLAT CN5	EA	44
28	17	PAOZZ		96906	MS21042-104	NUT,SELF-LOCKING CN5	EA	40
28	18	XBOZZ		80063	SM-B-982057	SPACER,HINGE CN5	EA	1
28	19	XBOZZ		80063	SM-B-982052	HANDLE CN5	EA	2
28	20	XBOZZ		11815	CR163-6-6	RIVET CN5	EA	28
28	21	XBOZZ		80063	SM-B-982050-1	LOOP, FOOTMAN CN5	EA	4
28	22	XBOZZ		80063	SM-C-982025	SKID CN5	EA	2
28	23	PAOZZ	5305-00-719-5007	96906	MS35249-90	SCREW, MACHINE, FLAT CN5	EA	24
28	24	PAOZZ		80063	SM-B-982027-1	STRAP ASSEMBLY CN5	EA	4
28	25	PAOZZ		80063	SM-B-982027-2	STRAP ASSEMBLY CN5	EA	2
28	26	PAOZZ	5305-00-059-3659	96906	MS51958-63	SCREW, MACHINE CN5	EA	4
28	27	XBOZZ		80063	SM-D-981985	COVERING, OUTER CN5	EA	1
28	28	PAOZZ		80063	SM-B-982003-2	STRAP, TRANSIT CN5	EA	2



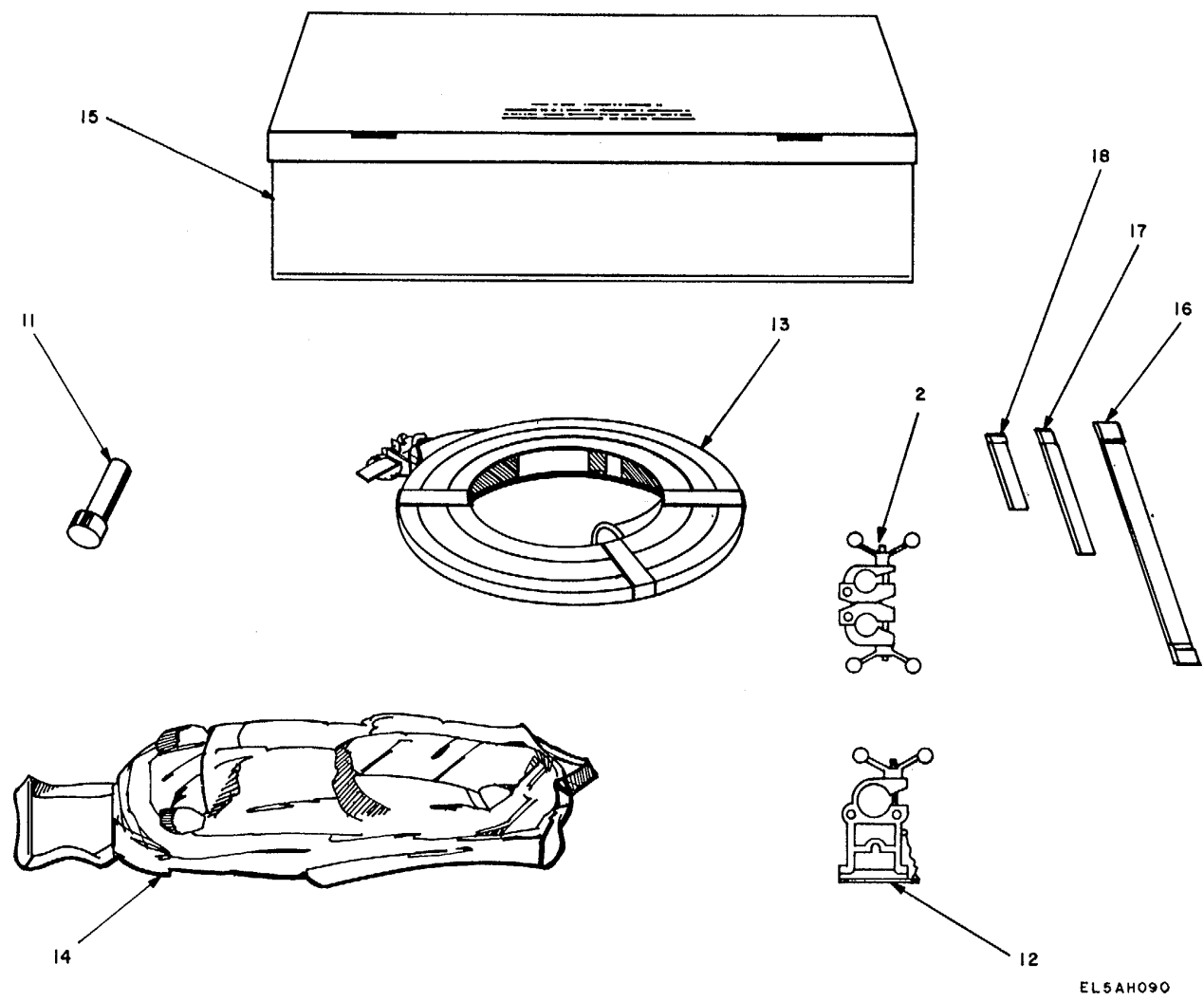
EL5AH089

Figure 29. Tower Accessory Kit MK-1725/G.

SECTION II

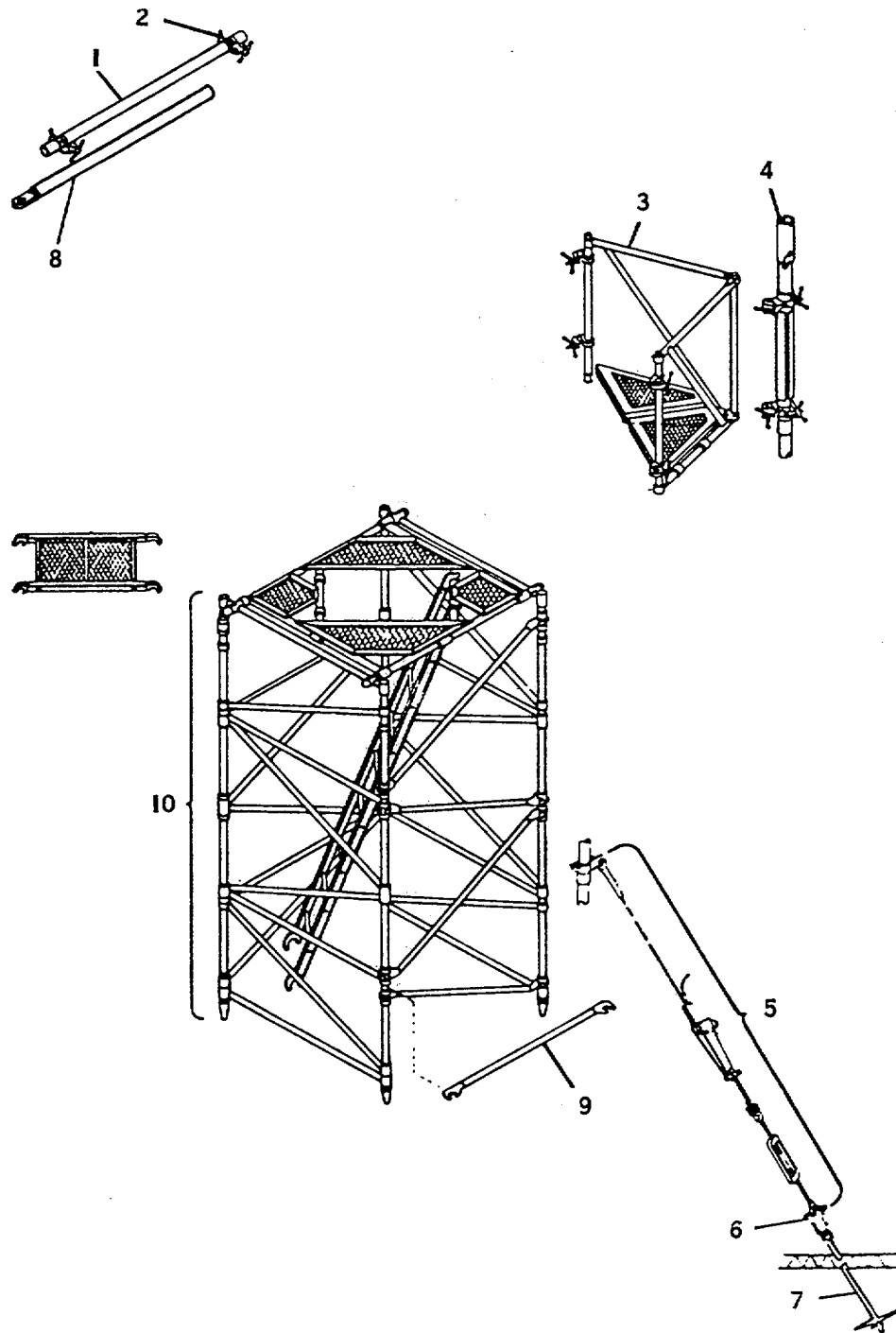
TM 11-5985-348-24P

(1) ILLUSTRATION		(2)	(3)	(4)	(5)	(6)	(7)	(8)
(a) FIG NO.	(b) ITEM NO.	SMR CODE	NATIONAL STOCK NUMBER	FSCM	PART NUMBER	DESCRIPTION USABLE ON CODE	U/M	QTY INC IN UNIT
						GROUP 03 TOWER ACCESSORY KIT MK-1725/G		
29	3	PAOZZ	5445-00-606-3858	80063	SM-B-981779	GUY CABLE ASSY CN4	EA	8
29	4	PBOZZ	5985-01-036-3157	80063	SM-C-981790	SUPPORT,WAVEGUIDE CN4	EA	56
29	5	PBOZZ	5445-00-611-7228	80063	SM-C-982010	COUPLER SWIVEL CN4	EA	8
29	6	PAOZZ	5445-01-009-4357	80063	SM-B-982004	BAG,ACCESSORY CN4	EA	3
29	7	PBOZZ		80063	SM-C-982053-1	BELT,SAFET CN4	EA	2
29	8	PBOZZ		80063	SM-C-982053-2	STRAP,SAFET CN4	EA	2



EL5AH090

Figure 30. Tower Extension AB-1238/G (Sheet 1 of 2).



EL5AH091

Figure 30. Tower Extension AB-1238/G (Sheet 2 of 2).

(1) ILLUSTRATION		(2)	(3)	(4)	(5)	(6)	(7)	(8)
(a) FIG NO.	(b) ITEM NO.	SMR CODE	NATIONAL STOCK NUMBER	FSCM	PART NUMBER	DESCRIPTION USABLE ON CODE	U/M	QTY INC IN UNIT
						GROUP 04 TOWER EXTENSION AB-1238/G		
30	1	PAOZZ	5445-00-610-1501	80063	SM-B-982032	BRACE,AUXILIARY HOR..... DEB	EA	8
30	2	PBOZZ	5445-00-611-7228	80063	SM-C-982010	COUPLER SWIVEL..... DEB	EA	16
30	3	PDOHH	5445-00-629-5589	80063	SM-D-981786	A FRAME..... DEB	EA	4
30	4	PDODD	5445-00-626-9009	80063	SM-D-981787	POST.ANTENNA..... DEB	EA	4
30	5	PDDDD	5445-0D-626-9023	80063	SM-D-982095	GUY ASSEMBLY..... DEB	EA	8
30	6	PAOZZ		80063	SM-B-982007	CLEVIS,ANCHOR..... DEB	EA	4
30	7	PAOZZ	4030-01-008-1217	80063	SM-B-982006-2	ANCHOR,GUY..... DEB	EA	4
30	8	PBOZZ	5445-00-610-1348	80063	SM-C-981883	STAYBAR ANTENNA..... DEB	EA	8
30	9	PAOZZ	5445-01-017-6184	80063	SM-C-982080	BRACE,HORIZONTAL..... DEB	EA	6
30	10	PDODD	5445-00-610-9010	80063	SM-D-981784	SECTION TOWER..... DEB	EA	3
30	11	PADZZ	5445-00-606-3858	80063	SM-B-981779	STAYBAR ADAPTER..... DEB	EA	3
30	12	PBDZZ		80063	SM-C-981779	WAVEGUIDE CLAMP..... DEB	EA	16
30	13	PBOZZ	5985-00-954-4940	80063	SM-D-558272-1	WAVEGUIDE ASSEMBLY..... DEB	EA	8
30	14	PAOZZ	5445-01-009-4357	80063	SM-B-982004	BAG,ACCESSORY..... DEB	EA	2
30	10	PAOZZ		80063	SM-D-981172	BIN WAVEGUIDE..... DEB	EA	1
30	16	XBOZZ	5340-01-029-9169	80063	SM-B-981958-4	STRAP.WEBBING..... DEB	EA	17
30	17	PAOZZ	5340-01-151-4106	80063	SM-B-981958-5	STRAP TRANSIT..... DEB	EA	6
30	18	PAOZZ	5340-01-151-4105	80063	SM-B-981958-3	STRAP TRANSIT..... OEB	EA	4

NATIONAL STOCK NUMBER AND PART NUMBER INDEX

STOCK NUMBER	FIGURE NO.	ITEM NO.	STOCK NUMBER	FIGURE NO.	ITEM NO.
5310-00-045-5213	15	2	5445-00-626-9023	25	5
5305-00-054-6652	2	4	5445-00-626-9023	30	5
5315-00-058-9756	9	13	5445-00-626-9068	2	9
5315-00-058-9812	4	3	5445-00-626-9068	3	6
5315-00-058-9834	18	19	5445-00-626-9068	8	6
5315-00-058-9834	19	2	5445-00-629-5589	1	4
5305-00-059-3659	28	26	5445-00-629-5589	25	3
5320-00-117-6828	28	9	5445-00-629-5589	30	3
5320-00-117-6950	28	7	5310-00-656-0114	2	20
5305-00-247-1325	28	15	5310-00-656-0114	9	9
5975-00-519-6166	15	5	5310-00-656-0114	14	4
5310-00-550-5054	18	13	5310-00-656-0114	27	2
5975-00-563-0229	1	28	5315-00-664-8062	9	6
5305-00-576-5417	18	2	5315-00-753-3894	5	4
5310-00-582-5677	20	3	5315-00-753-3894	7	4
5310-00-595-6211	28	5	5320-00-754-0822	28	2
5445-00-606-3537	11	1	5310-00-773-7618	12	3
5445-00-606-3538	17	3	5310-00-773-7618	18	10
4020-00-606-3836	1	24	5310-00-802-4701	2	7
5445-00-606-3858	25	11	5315-00-809-1147	9	3
5445-00-606-3858	29	3	5315-00-814-4456	2	16
5445-00-610-1335	3	3	5315-00-823-8742	5	2
5445-00-610-1348	1	7	5315-00-823-8742	7	2
5445-00-610-1348	25	8	5305-00-879-2736	18	17
5445-00-610-1380	4	5	5305-00-879-8351	18	9
5445-00-610-1497	2	2	5985-00-954-4940	30	13
5445-00-610-1498	2	15	5305-00-964-0635	12	2
5445-00-610-1501	25	1	5445-01-009-4357	1	19
5445-00-610-1501	30	1	5445-01-009-4357	25	14
5445-00-610-1506	3	4	5445-01-009-4357	29	6
5445-00-610-1506	8	5	5445-01-009-4357	30	14
5445-00-610-1508	3	5	5445-01-017-6184	1	11
5445-00-610-1508	8	4	5445-01-017-6184	25	9
5445-00-611-7228	1	2	5445-01-017-6184	30	9
5445-00-611-7228	25	2	5210-01-028-0949	2	3
5445-00-611-7228	29	5	5120-01-028-4992	1	21
5445-00-611-7228	30	2	5975-01-028-9487	18	1
5445-00-611-7233	10	4	5340-01-029-9169	1	25
5445-00-611-7238	1	18	5340-01-029-9169	25	16
5445-00-611-7240	1	22	5340-01-029-9169	30	16
5445-00-611-7291	9	5	5985-01-038-3157	29	4
5445-00-611-1297	9	14	5340-01-151-4105	1	26
5310-00-614-3505	22	2	5340-01-151-4105	25	18
5310-00-614-3505	23	3	5340-01-151-4105	30	18
5310-00-614-3506	9	4	5340-01-151-4106	1	29
5310-00-611-1148	28	16	5340-01-151-4106	25	17
5445-00-622-7440	17	4	5340-01-151-4106	30	17
5445-00-626-8979	1	6	5340-01-151-6061	11	16
5445-00-626-8980	1	17	5340-01-151-6061	26	16

FSCM	PART NUMBER	FIGURE NO.	ITEM NO.	FSCM	PART NUMBER	FIGURE NO.	ITEM NO.
88044	AN470AD4-5	28	2	96906	MS16562-238	7	4
88044	AN470AD4-6	28	9	96906	MS16562-238	13	4
11815	CR163-6-6	28	20	96906	MS16562-250	28	12
96906	MS15795-803	28	5	96906	MS16562-252	5	2
96906	MS15795-808	28	16	96906	MS16562-252	7	2
96906	MS15795-809	18	13	96906	MS16562-252	13	2
96906	MS15795-810	20	3	96906	MS16562-253	6	2
96906	MS15795-813	2	7	96906	MS16562-255	2	14
96906	MS15795-814	12	3	96906	MS16562-255	4	3
96906	MS15795-814	18	10	96906	MS16562-256	11	4
96906	MS15795-817	9	4	96906	MS16562-256	24	3
06906	MS15795-819	10	12	96906	MS16562-256	26	4
96906	MS15795-819	2	20	96906	MS16562-262	23	2
96906	MS15795-819	9	9	96906	MS16562-264	22	4
96906	MS15795-819	14	4	96906	MS16562-269	9	6
96906	MS15795-819	27	2	96906	MS16562-269	10	6
96906	MS15795-820	22	2	96906	MS16562-269	14	2
96906	MS15795-820	23	3	96906	MS16562-271	18	19
96906	MS15795-913	15	2	96906	MS16562-271	19	2
96906	MS16200-102	2	5	96906	MS16562-271	27	4
96906	MS16200-102	15	4	96906	MS16592-191	27	8
96906	MS16200-17	28	4	96906	MS171663	9	12
96906	MS16562-Z01	20	1	96906	MS171717	9	3
96906	MS16562-227	6	4	96906	MS20426AD4-5	28	7
96906	MS16562-227	9	13	96906	MS20470AD4-9	28	10
96906	MS16562-238	5	4	96906	MS21042-104	28	17

NATIONAL STOCK NUMBER AND PART NUMBER INDEX

FSCM	PART NUMBER	FIGURE		ITEM		FSCM	PART NUMBER	FIGURE		ITEM	
		NO.	NO.	NO.	NO.			NO.	NO.		
96906	MS21042-44	28	6	80063	SM-B-981950	11	15				
96906	MS35234-65	28	15	80063	SM-B-981950	24	10				
96906	MS35249-90	28	23	80063	SM-B-981950	26	15				
96906	MS35307-360	18	2	80063	SM-B-981952	18	16				
96906	MS35307-364	11	12	80063	SM-B-981954	21	4				
96906	MS35307-364	26	12	80063	SM-B-981958-1	18	12				
96906	MS35307-365	11	6	80063	SM-B-981958-2	18	15				
96906	MS35307-365	24	5	80063	SM-B-981958-3	1	26				
96906	MS35307-365	26	6	80063	SM-B-981958-3	25	18				
96906	MS35307-369	12	2	80063	SM-B-981958-3	30	18				
96906	MS35307-371	18	9	80063	SM-B-981958-4	1	25				
96906	MS35307-372	18	17	80063	SM-B-981958-4	25	16				
96906	MS51957-28	2	4	80063	SM-B-981958-4	30	16				
96906	MS51958-63	28	26	80063	SM-B-981958-5	1	29				
96906	MS75014	1	10	80063	SM-B-981958-5	25	17				
80205	NAS561C4-24	2	16	80063	SM-B-981958-5	30	17				
80058	PF-211/G	1	28	80063	SM-B-981961	21	5				
80063	SM-B-981773	4	2	80063	SM-B-981962	21	3				
80063	SM-B-981779	25	11	80063	SM-B-981963	21	1				
80063	SM-B-981779	29	3	80063	SM-B-981967	22	3				
80063	SM-B-981792	2	9	80063	SM-B-981973	20	2				
80063	SM-B-981792	3	6	80063	SM-B-981974	20	4				
80063	SM-B-981792	8	6	80063	SM-B-981990-1	11	1				
80063	SM-B-981794	2	15	80063	SM-B-981999	1	23				
80063	SM-B-981796	2	19	80063	SM-B-982000	1	21				
80063	SM-B-981797	2	18	80063	SM-B-982001	1	27				
80063	SM-B-981798	2	17	80063	SM-B-982003-2	28	28				
80063	SM-B-981804	2	12	80063	SM-B-982004	1	19				
80063	SM-B-981806	2	3	80063	SM-B-982004	25	14				
80063	SM-B-981836	6	1	80063	SM-B-982004	29	6				
80063	SM-B-981837	6	3	80063	SM-B-982004	30	14				
80063	SM-B-981846	4	1	80063	SM-B-982005	1	20				
80063	SM-B-981847	4	4	80063	SM-B-982006-1	1	9				
80063	SM-B-981866	5	1	80063	SM-B-982006-2	1	9				
80063	SM-B-981866	7	1	80063	SM-B-982006-2	25	7				
80063	SM-B-981866	13	1	80063	SM-B-982006-2	30	7				
80063	SM-B-981867	5	3	80063	SM-B-982007	1	8				
80063	SM-B-981867	7	3	80063	SM-B-982007	25	6				
80063	SM-B-981867	13	3	80063	SM-B-982007	30	6				
80063	SM-B-981877	14	5	80063	SM-B-982012	1	13				
80063	SM-B-981887	10	1	80063	SM-B-982013	16	2				
80063	SM-B-981888-1	10	2	80063	SM-B-982014	16	1				
80063	SM-B-981888-2	18	6	80063	SM-B-982016	15	5				
80063	SM-B-981893	27	11	80063	SM-B-982027-1	28	24				
80063	SM-B-981896	10	5	80063	SM-B-982027-2	28	25				
80063	SM-B-981897-1	10	8	80063	SM-B-982028	28	8				
80063	SM-B-981897-2	9	7	80063	SM-B-982029	19	5				
80063	SM-B-981897-2	10	9	80063	SM-B-982031	1	22				
80063	SM-B-981897-2	14	1	80063	SM-B-982032	25	1				
80063	SM-B-981897-2	22	5	80063	SM-B-982032	30	1				
80063	SM-B-981897-2	23	1	80063	SM-B-982033-1	11	13				
80063	SM-B-981897-3	27	5	80063	SM-B-982033-2	26	13				
80063	SM-B-981898	10	7	80063	SM-B-982036	1	24				
80063	SM-B-981898	27	3	80063	SM-B-982040-1	2	6				
80063	SM-B-981899	9	8	80063	SM-B-982040-1	15	3				
80063	SM-B-981899	10	11	80063	SM-B-982040-2	11	7				
80063	SM-B-981899	14	3	80063	SM-B-982040-2	11	11				
80063	SM-B-981899	22	1	80063	SM-B-982040-2	12	4				
80063	SM-B-981899	23	4	80063	SM-B-982040-2	18	3				
80063	SM-B-981899	27	1	80063	SM-B-982040-2	24	6				
80063	SM-B-981932	17	7	80063	SM-B-982040-2	26	7				
80063	SM-B-981933	17	5	80063	SM-B-982040-2	26	11				
80063	SM-B-981937	18	1	80063	SM-B-982040-3	2	22				
80063	SM-B-981938	18	5	80063	SM-B-982041-1	27	9				
80063	SM-B-981939-1	18	18	80063	SM-B-982041-2	2	8				
80063	SM-B-981939-2	18	11	80063	SM-B-982041-2	15	1				
80063	SM-B-981939-3	18	4	80063	SM-B-982042	10	3				
80063	SM-B-981941	19	3	80063	SM-B-982042	11	9				
80063	SM-B-981946	11	10	80063	SM-B-982042	18	7				
80063	SM-B-981946	24	9	80063	SM-B-982042	24	8				
80063	SM-B-981946	26	10	80063	SM-B-982042	26	9				
80063	SM-B-981947	11	3	80063	SM-B-982042	27	10				
80063	SM-B-981947	24	2	80063	SM-B-982044	18	14				
80063	SM-B-981947	26	3	80063	SM-B-982048	27	7				
80063	SM-B-981948	11	5	80063	SM-B-982050-1	28	21				
80063	SM-B-981948	24	4	80063	SM-B-982052	28	19				
80063	SM-B-981948	26	5	80063	SM-B-982057	28	18				
80063	SM-B-981949	11	8	80063	SM-B-982061	28	3				
80063	SM-B-981949	24	7	80063	SM-B-982065	28	13				
80063	SM-B-981949	26	8	80063	SM-B-982087	26	1				

NATIONAL STOCK NUMBER AND PART NUMBER INDEX

FSCM	PART NUMBER	FIGURE		ITEM		FSCM	PART NUMBER	FIGURE		ITEM	
		NO.	NO.	NO.	NO.			NO.	NO.		
80063	SM-B-982092	11	16	80063	SM-D-558272-1	30	13				
80063	SM-B-982092	26	16	80063	SM-D-981769	8	3				
80063	SM-B-982093	1	30	80063	SM-D-981770	1	17				
80063	SM-C-981790	29	4	80063	SM-D-9817t2	25	15				
80063	SM-C-981803	2	13	80063	SM-D-981772	30	15				
80063	SM-C-981864	3	2	80063	SM-D-9o1181	2	1				
80063	SM-C-981865	5	5	80063	SM-D-981782	2	10				
80063	SM-C-981883	1	7	80063	SM-D-981783	1	14				
80063	SM-C-981883	25	8	80063	SM-D-981784	1	15				
80063	SM-C-981884	12	1	80063	SM-D-981784	25	10				
80063	SM-C-981886	10	13	80063	SM-D-981784	30	10				
80063	SM-C-981894	10	4	80063	SM-D-981785	8	2				
80063	SM-C-981895	10	10	80063	SM-D-981786	1	4				
80063	SM-C-981898	9	10	80063	SM-D-981786	25	3				
80063	SM-C-981900	9	5	80063	SM-D-981786	30	3				
80063	SM-C-981901	9	1	80063	SM-D-981787	1	5				
80063	SM-C-981902	9	2	80063	SM-D-981787	25	4				
80063	SM-C-981931	17	8	80063	SM-D-981787	30	4				
80063	SM-C-981934	17	4	80063	SM-D-981786	8	1				
80063	SM-C-981936	18	8	80063	SM-D-981789-1	1	6				
80063	SM-C-981940	19	1	80063	SM-D-981789-2	1	6				
80063	SM-C-981942	19	4	80063	SM-D-981789-3	1	6				
80063	SM-C-981944	24	11	80063	SM-D-981789-4	1	6				
80063	SM-C-981945	11	2	80063	SM-D-981795	2	11				
80063	SM-C-981945	24	1	80063	SM-D-981805	2	2				
80063	SM-C-981945	26	2	80063	SM-D-981818	3	3				
80063	SM-C-981976	1	18	80063	SM-D-981834	3	5				
80063	SM-C-981977	17	6	80063	SM-D-981834	8	4				
80063	SM-C-981987	28	11	80063	SM-D-981835	6	5				
80063	SM-C-981991-1	11	14	80063	SM-D-981843	3	1				
80063	SM-C-981991-2	26	14	80063	SM-D-981844	4	5				
80063	SM-C-982010	1	2	80063	SM-D-981871	1	16				
80063	SM-C-982010	25	2	80063	SM-D-981872	7	5				
80063	SM-C-982010	29	5	80063	SM-D-981889	28	14				
80063	SM-C-982010	30	2	80063	SM-D-981903	9	11				
80063	SM-C-982015	1	12	80063	SM-D-981904	9	14				
80063	SM-C-982019	22	6	80063	SM-D-981929	17	1				
80063	SM-C-982020	20	5	80063	SM-D-981930	17	2				
80063	SM-C-982021	17	3	80063	SM-D-981935	18	20				
80063	SM-C-982022	23	5	80063	SM-D-981985	28	27				
80063	SM-C-982023	23	6	80063	SM-D-982002	1	3				
80063	SM-C-982025	28	22	80063	SM-D-982009	14	6				
80063	SM-C-982053-1	29	7	80063	SM-D-982017	3	4				
80063	SM-C-982053-2	29	8	80063	SM-D-982017	8	5				
80063	SM-C-982068	28	1	80063	SM-D-982018	6	6				
80063	SM-C-982079	13	5	80063	SM-D-982095	25	5				
80063	SM-C-982080	1	11	80063	SM-D-982095	30	5				
80063	SM-C-982080	25	9	96906	SMC981790	25	12				
80063	SM-C-982080	30	9	96906	SMC982047	27	6				
				80063	XMD558272-1	25	13				

LATEST NATIONAL STOCK NUMBER AND PART NUMBER ASSIGNMENTS

STOCK NUMBER	FIGURE		ITEM		
	NO.	NO.	NO.	NO.	
5315-00-058-9834	21		2		
5445-00-606-3858	30		11		
5445-00-610-1348	30		8		
5445-01-017-6184	3		7		
FSCM	PART NUMBER	FIGURE		ITEM	
		NO.	NO.	NO.	NO.
80063	SMB982040-3	2		21	
80063	SMB981779	30		11	
80063	SMC981779	30		12	
80063	SMC981883	30		8	
80063	SMC982080	3		7	
96906	MS16562-271	21		2	

**NATIONAL STOCK NUMBER AND PART NUMBER INDEX
 ADDITIONAL LATEST NATIONAL STOCK NUMBER AND PART NUMBER ASSIGNMENTS**

STOCK NUMBER	FIGURE NO.	ITEM NO.	STOCK NUMBER	FIGURE NO.	ITEM NO.
5305-00-021-3740	11	12	5445-00-626-9071	22	3
5305-00-021-3740	26	12	5310-00-655-7146	12	4
5305-00-054-5651	28	4	5310-00-655-7146	18	3
5315-00-058-9698	27	8	5310-00-656-0114	10	12
5315-00-058-9756	6	4	5315-00-664-8062	10	6
5315-00-058-9808	6	2	5315-00-664-8062	14	2
5315-00-058-9812	2	14	5305-00-719-5007	28	23
4030-00-185-0482	11	15	5315-00-753-3894	13	4
4030-00-185-0482	24	10	5315-00-753-3895	11	4
4030-00-185-0482	26	15	5315-00-753-3895	24	3
4030-00-187-5261	1	10	5315-00-753-3895	26	4
5975-00-549-0011	1	12	5315-00-805-0300	9	12
5445-00-606-3681	19	3	5315-00-823-8742	13	2
5445-00-606-3800	2	11	5315-00-844-0342	28	12
5445-00-606-3878	26	1	5315-00-844-0498	22	4
5445-00-606-3883	18	11	5305-00-847-1159	11	6
5445-00-606-3934	10	1	5305-00-347-1159	24	5
5445-00-606-3683	9	10	5305-00-847-1159	26	6
5445-00-610-1353	8	3	5315-00-853-0681	20	1
5445-00-610-1377	8	1	5985-00-954-4940	25	13
5445-00-610-1501	1	1	5315-00-984-2645	23	2
5445-00-610-1504	18	8	4030-01-005-3268	1	9
5445-00-610-1505	7	5	3940-01-005-3314	17	6
5445-00-610-9010	1	15	3940-01-005-3887	24	11
5445-00-610-9010	25	10	5306-01-005-4391	9	7
5445-00-610-9010	30	10	5310-01-006-0299	2	18
5445-00-611-7225	9	11	5340-01-006-4068	4	2
5445-00-611-7238	1	18	5306-01-007-1477	2	19
5445-00-611-7289	9	2	3120-01-007-1701	2	17
5445-00-611-7290	9	1	5305-01-008-1090	10	3
5445-00-622-7456	24	1	5305-01-008-1090	18	7
5445-00-622-7465	18	4	5305-01-008-1090	27	10
5445-00-626-8978	1	14	4030-01-008-1217	1	9
5445-00-626-8979	1	6	4030-01-008-1217	25	7
5445-00-626-8986	1	6	4030-01-008-1217	30	7
5445-00-626-8987	1	6	4030-01-008-6353	11	14
5445-00-626-9002	1	3	4030-01-008-6353	26	14
5445-00-626-9008	1	6	5340-01-008-6355	4	4
5445-00-626-9009	1	5	5340-01-008-7671	5	1
5445-00-626-9009	25	4	5340-01-008-7671	7	1
5445-00-626-9009	30	4	5340-01-008-7671	13	1
5445-00-626-9016	3	2	5120-01-008-7957	1	27
5445-00-626-9023	1	8	5445-01-016-2604	1	16
5445-00-626-9023	25	6	5310-01-028-6494	2	6
5445-00-626-9071	5	3	5310-01-028-6494	15	3
5445-00-626-9071	7	3	5340-01-029-9079	18	6
5445-00-626-9071	13	3	5305-01-032-3498	28	13

FSCM	PART NUMBER	FIGURE NO.	ITEM NO.
80063	SM-B-982032	1	1

71/(72 BLANK)

By Order of the Secretary of the Army:

Official:

ROBERT M. JOYCE
Major General, United States Army
The Adjutant General

JOHN A. WICKHAM JR.
General United States Army
Chief of Staff

DISTRIBUTION:

To be distributed in accordance with DA Form 12-51A, Organizational Maintenance requirements for AB-585/G.

*U.S. GOVERNMENT PRINTING OFFICE: 1993 0 - 342-421 (61895)

RECOMMENDED CHANGES TO EQUIPMENT TECHNICAL PUBLICATIONS



THEN... JOT DOWN THE DOPE ABOUT IT ON THIS FORM, CAREFULLY TEAR IT OUT, FOLD IT AND DROP IT IN THE MAIL!

SOMETHING WRONG WITH THIS PUBLICATION?

FROM: (PRINT YOUR UNIT'S COMPLETE ADDRESS)

DATE SENT

PUBLICATION NUMBER

PUBLICATION DATE

PUBLICATION TITLE

BE EXACT... PIN-POINT WHERE IT IS

IN THIS SPACE TELL WHAT IS WRONG AND WHAT SHOULD BE DONE ABOUT IT:

PAGE NO.	PARA-GRAPH	FIGURE NO.	TABLE NO.
----------	------------	------------	-----------

TEAR ALONG PERFORATED LINE

PRINTED NAME, GRADE OR TITLE, AND TELEPHONE NUMBER

SIGN HERE:

DA FORM 2028-2 JUL 79

PREVIOUS EDITIONS ARE OBSOLETE.

P.S.—IF YOUR OUTFIT WANTS TO KNOW ABOUT YOUR RECOMMENDATION MAKE A CARBON COPY OF THIS AND GIVE IT TO YOUR HEADQUARTERS.

PIN: 054439-000